



# Handbook for Reproduction and Replication Studies



Lukas Röseler\*, Lukas Wallrich\*, Helena Hartmann, Luisa  
Altegoer, Veronica Boyce, Sarahanne M. Field, Janik  
Goltermann, Joachim Hüffmeier, Charlotte R. Pennington,  
Merle-Marie Pittelkow, Priya Silverstein, Don van Ravenzwaaij,  
Flavio Azevedo



**MUCOS**  
Münster Center  
for Open Science



# Table of contents

- Summary 1
  - How to Cite . . . . . 2
  
- I Foundations 3
  - 1 Background 4
  - 2 Understanding Replications and Reproductions 7
    - 2.1 Reproduction and Replication . . . . . 7
    - 2.2 Outcome . . . . . 9
    - 2.3 Types of replication . . . . . 9
    - 2.4 Types of reproduction . . . . . 12
  
- II The Reproduction and Replication Process 13
  - 3 Choosing the Target Study 14
    - 3.1 Determining Reproduction and Replication Value . . . . . 15
    - 3.2 Value . . . . . 16
    - 3.3 Uncertainty . . . . . 16
    - 3.4 (Potential) Researcher Bias . . . . . 21
    - 3.5 Feasibility . . . . . 22
  - 4 Planning and Conducting Reproductions and Replications 23
    - 4.1 Post Publication Conversations . . . . . 25
    - 4.2 Reproduction before Replication . . . . . 25
    - 4.3 Close replication before conceptual replication . . . . . 27
  - 5 Execution of Reproductions 29
    - 5.1 Gathering resources . . . . . 29

## Table of contents

5.2	Contacting Authors . . . . .	30
5.3	Identification of Claims . . . . .	30
5.4	Preregistration . . . . .	31
5.5	Deviations . . . . .	31
5.6	Discussion . . . . .	32
6	Execution of Replications	33
6.1	Preregistration and Registered (Replication) Reports . . . . .	33
6.2	Sample Size Determination . . . . .	34
6.3	Changes in the Methods . . . . .	38
6.4	Piloting . . . . .	40
6.5	Adversarial Collaborations . . . . .	41
6.6	Analysis . . . . .	41
7	Discussion	43
7.1	Defining and Determining Replication Success . . . . .	43
7.2	Interpreting Divergent Results (Replication Failures) . . . . .	51
7.3	The Role of Differences for the Interpretation of Findings . . . . .	53
7.4	Comments from the Original Study’s Authors . . . . .	54
III Advanced Topics and Applications		55
8	Communicating and Publishing	56
9	Field-Specific Replication Challenges: An example from MRI research	61
9.1	Introduction . . . . .	61
9.2	Researcher Degrees of Freedom . . . . .	62
9.3	Sample Size Justification . . . . .	63
9.4	Criteria for Replication Success . . . . .	64
9.5	Open Science Practices in Neuroimaging . . . . .	65
IV Conclusion and Checklist		66
10	Conclusion	67
10.1	Reproductions and Replications Checklist . . . . .	67

## Table of contents

References	69
Appendices	86
A Author Contributions	86
B Potential Conflicts of Interest	89
C Funding	90
D Acknowledgments	91
E Email templates	92
E.1 Asking for materials and data . . . . .	92
E.2 Asking for comments on an experimental paradigm . . . . .	93
E.3 Asking for comments on replication results . . . . .	93

# Summary

Note — Preliminary Version 0.1

This is a preliminary version. Feedback welcome: [lukas.roeseler@uni-muenster.de](mailto:lukas.roeseler@uni-muenster.de) or [GitHub](#).

The practice of retesting published results with the same data (reproduction) or new data (replication) is currently gaining traction in the social sciences, owing to multiple failures to reproduce and replicate published findings. Along with increased skepticism have come guidelines for the repeated testing of hypotheses from various disciplines and fields. This guide aims to enable researchers to conduct high-quality reproductions and replications across social science disciplines. First we summarize recent developments, then provide a comprehensive guide to carrying out reproductions and replications, and finally present an example for how guidance needs to be tailored for specific fields. Our guide covers the entire research process: choosing a target study, deciding between different types of reproductions and replications, planning and running the new study, analyzing the results, discussing outcomes in the light of potential differences, and publishing a report.

Keywords: replication, repetitive research, reproducibility, meta-science, meta-research, open science, open research, open scholarship



FORRT



Last update: 2026-04-17

## How to Cite

Please cite this handbook as:

Röseler, L.\*, Wallrich, L.\*, Hartmann, H., Hüffmeier, J., Goltermann, J., Pennington, C. R., Boyce, V., Field, S. M., Pittelkow, M.-M., Silverstein, P., van Ravenzwaaij, D., Azevedo, F. (2025). Handbook for Reproduction and Replication Studies. Retrieved from [https://forrt.org/replication\\_handbook](https://forrt.org/replication_handbook), <https://doi.org/10.5281/zenodo.16990114>

\*shared first authorship

# Part I

## Foundations

# 1 Background

Note — Preliminary Version 0.1

This is a preliminary version. Feedback welcome: [lukas.roeseler@uni-muenster.de](mailto:lukas.roeseler@uni-muenster.de) or GitHub.

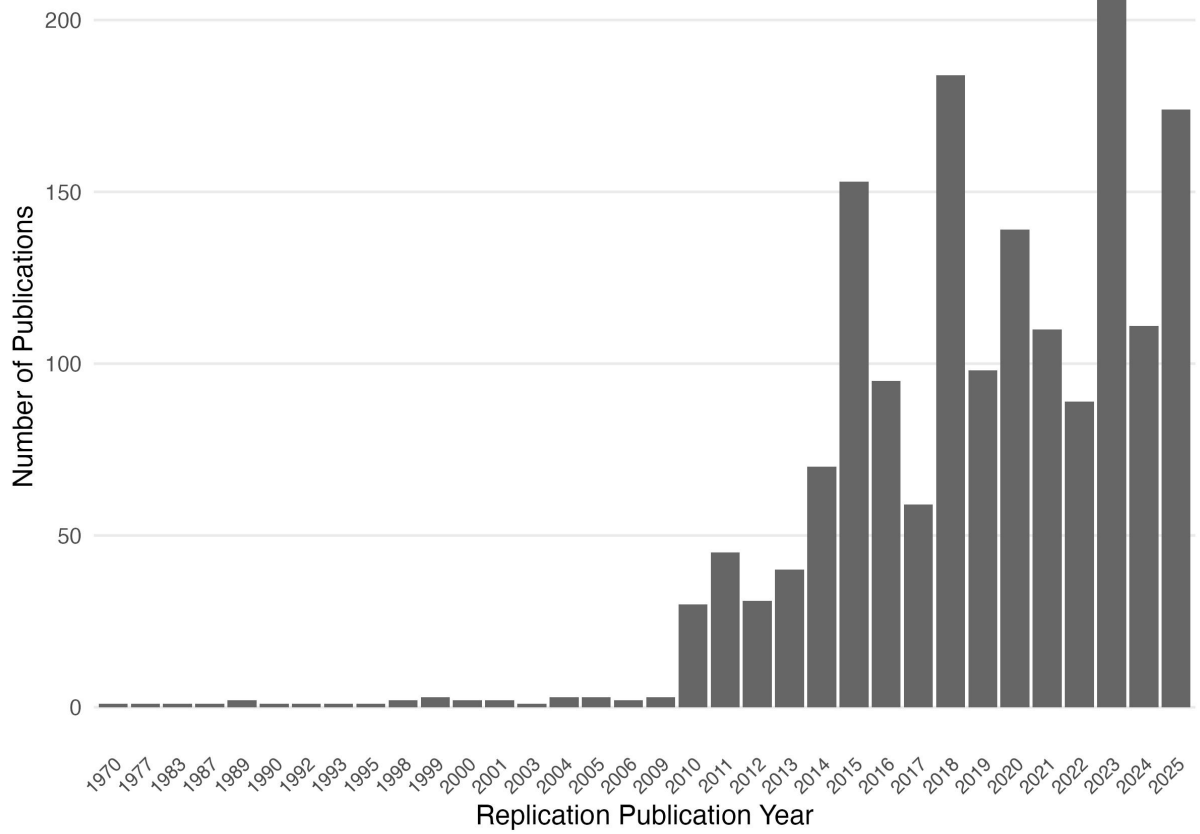
“The proof established by the test must have a specific form, namely, repeatability. The issue of the experiment must be a statement of the hypothesis, the conditions of test, and the results, in such form that another experimenter, from the description alone, may be able to repeat the experiment. Nothing is accepted as proof, in psychology or in any other science, which does not conform to this requirement.” – (Dunlap, 1926)

Repeatability is the cornerstone of many sciences: Although scientific claims are often assumed to be robust, without explicit reproduction and replication — that is, retesting a hypothesis with the same (reproduction) or different (replication) data — it remains unclear whether this assumption holds.

Cumulative science without repetition is costly: building on unreliable findings leads to research waste and misdirected effort. The aim of this guide is to empower researchers to conduct high-quality reproductions and replications and thereby contribute to making their fields of research more cumulative and robust. Issues of replicability have been discussed across many disciplines, such as psychology (Open Science Collaboration, 2015), economics (Dreber & Johannesson, 2024), biology (Errington, Mathur, et al., 2021), marketing (Urminsky & Dietvorst, 2024), linguistics (McManus, 2024), computer science (Hummel & Manner, 2024) and epidemiology (Lash et al., 2018) and the number of replications has been rising sharply (see Figure 1.1, which shows replications only as there is no comprehensive database for reproductions yet).

# 1 Background

Figure 1.1: Number of replication studies by year of publication, based on the FORRT Library of Replication Attempts (FLoRA) as of April 17, 2026.



## 1 Background

While the number of replication and reproduction studies has increased, the overall proportion of them is still very small, with reviews finding that replications make up well below 1% of published papers (Perry et al., 2022). Moreover, much of the guidance on replications is still being developed (Clarke et al., 2024) and in narrow parts of science, which leads to fragmentation, siloing, and potentially inconsistent information.

Here we attempt to integrate useful guidelines (e.g., Block & Kuckertz, 2018; Jekel et al., 2020) into a comprehensive overview that allows diverse fields to profit from each other. In sum, this guide provides information about the entire process of research allowing researchers at all career stages to plan, conduct, and publish reproduction and replication studies. We limit our scope to quantitative research, given that the concept of reproducibility and replicability itself is highly contested among qualitative researchers (Bennett, 2021; Cole et al., 2024; see Makel et al., 2012; Pownall, 2022).

# 2 Understanding Replications and Reproductions

Note — Preliminary Version 0.1

This is a preliminary version. Feedback welcome: [lukas.roeseler@uni-muenster.de](mailto:lukas.roeseler@uni-muenster.de) or [GitHub](#).

In this guide, we focus on studies that re-examine a previously tested hypothesis and refer to them as repetitions (i.e., reproductions and replications) with the general field being called repetitive research as suggested by Schöch (2023). However, it is important to note from the outset, that there is no overarching terminology or consensus (e.g., Voelkl et al., 2025), as the formal development of replication methods has begun relatively late in the social, behavioral, and cognitive sciences. For example, empirical psychology is more than 100 years old, but until the advent of the replication/reproducibility crisis in the early 2010s, replication methods have been rarely discussed (e.g., King, 1995). Different fields of research seem to tackle the task differently and independently, which has led to multiple overlapping terminologies across psychology (Hüffmeier et al., 2016; Schmidt, 2009), management (Tsang & Kwan, 1999), marketing (Urminsky & Dietvorst, 2024), organizational sciences (Köhler & Cortina, 2021), computer sciences (Heroux et al., 2018), language learning (McManus, 2024), and the humanities (Schöch, 2023).

## 2.1 Reproduction and Replication

The terms reproduction and replication are used in different ways between disciplines; for example, in psychology, studies using different data are commonly referred to as

## 2 Understanding Replications and Reproductions

replications and studies using the same data are referred to as reproductions, whereas in other fields, such as computational science or economics, these terms may be used in the opposite manner or treated interchangeably (Ankel-Peters et al., 2023; see Miłkowski et al., 2018). In this handbook, replication is used to refer to efforts involving the analysis of different data, and reproduction to efforts involving the same data. The different data do not necessarily need to be from a different sample but can also constitute distinct (non-overlapping) subsets from the same sample (e.g., incidental or panel data, Huang & Huang, 2024).

We discuss multiple cases to illustrate the relationship between reproduction and replication in Table 2.1 (Note that a similar distinction is made by The Turing Way Community (2025) but uses a less specific terminology for reproductions.)

Table 2.1: Possible combinations of reproduction and replication outcomes.

Case	Reproducible?	Replicable?	Possible interpretation
A	Yes	Yes	The original finding is reproducible and generalizable.
B	Yes	No	The original finding is reproducible but not generalizable.
C	No	Yes	The original finding is not reproducible but replicators could determine a scenario where it holds.
D	No	No	The original finding is neither reproducible nor generalizable.

Reproduction and replication should always be considered together and if possible, reproduction should come before replication. This is because, at the early stages of research, reproduction is much more cost efficient; first confirming whether the

findings are reproducible can clarify whether a replication is worthwhile. Furthermore, if the research procedure consists of “moving away” from a specific finding in terms of changing the analysis code, materials, and dataset to test its generalizability or boundary conditions, a numerical reproduction (using the same data and same code) is the closest possible repetition of a finding and a useful foundation for further steps.

### 2.2 Outcome

Common language often conflates outcome and study descriptions: researchers typically use the phrase “has been replicated” to refer to a replication attempt that has corroborated the findings of the original study, whereas “failed to replicate” or “could not be replicated” is used to refer to circumstances where a replication attempt has not corroborated the original results or has led to a different interpretation or conclusions (see also Patil et al., 2016a).

In this article, when we state that a “study was reproduced/replicated” we mean that there has been a replication attempt, irrespective of its outcome. With “replicable” and “reproducible” we express that there was support for the original hypothesis. Note that the outcome of a replication/reproduction study is often not straightforward, but may depend on the success criteria applied. This is discussed in Section 7.1.

### 2.3 Types of replication

We heavily rely on the typology provided by Hüffmeier et al. (2016) where different types of replications are defined by the closeness or similarity between original and replication study. Determining what constitutes closeness or similarity is context-specific and relies on a detailed understanding of the original study. Similarity cannot be evaluated without a theory about the concepts involved. For example, the concept of age can differ strongly between replications of historical, psychological, or biological studies, leading to different measures of the concept itself and thus different judgments about the similarity of an object’s age.

Under the assumption of a stable world and constant laws or regularities that are investigated by the social, behavioral, and cognitive sciences, a reproduction and replication study’s closeness to an original study is associated with replication ‘success’ (Hüffmeier et al., 2016; LeBel et al., 2018). The argument can be made from two different philosophical perspectives that we call inductive (phenomenon-focused, effects application, bottom-up) and deductive (Borgstede & Scholz, 2021; theory-focused, theory application, top down, e.g., Calder et al., 1981). From an inductive perspective, a replication that is very similar to an original study should lead to the same result whereas one that differs with respect to any criterion may lead to different results.<sup>1</sup> This is a stance often taken by proponents of findings that failed to replicate (e.g., Baumeister & Vohs, 2016; Syed, 2023), arguing that characteristics such as time or place are different and can be valid reasons for different results. From a deductive (theory-focused) view, the only changes that matter are those that affect the underlying theory. Consider for example a replication experiment that is identical in every aspect except for the season (summer instead of winter). If the theory that is tested is about color perception, the replication is likely judged to be close to the original study but if it is about participants’ current tea preferences, it is likely judged to be different from the original study in a theoretically relevant aspect.<sup>2</sup> A related dimension of closeness concerns contextual sensitivity—the extent to which the meaning of a questionnaire or the effect of a manipulation depends on time, culture, or population. As Van Bavel et al. (2016) demonstrate, studies on contextually sensitive topics were significantly less likely to replicate successfully in Open Science Collaboration (2015), even though methodological fidelity was high. This raises important questions about what constitutes a “close” replication: Should a study on celebrity attitudes, for example, use the same examples (which may be outdated and thus psychologically inert), or should it adapt to locally and temporarily salient figures to trigger the same cognitive or emotional responses? In such cases, strict methodological similarity might paradoxically undermine theoretical

---

<sup>1</sup>From an extreme inductive perspective that stresses that there is no logical foundation in inferring future events from previous events (Hume, 1748/2016), one could even argue that it may not make a difference whether one tries to make the same observation again under the same or different circumstances.

<sup>2</sup>On a different note, Vohs et al. (2021) published a study that was different from previous studies in that it did not replicate any previous study but was instead designed to be ideal to test the theory and estimate the average effect size and termed it “paradigmatic replication approach”. Given the present terminology, we do not consider this a replication.

closeness, and thus the validity of the replication attempt. This tension highlights that procedural fidelity does not always equate to theoretical equivalence—particularly for studies involving social meaning, identity, or temporally anchored norms. LeBel et al. (2018) provide a taxonomy for classifying a replication study’s closeness for psychological research (Figure 2.1).

Figure 2.1: Taxonomy for classifying a replication study’s methodological similarity to an original study. Note that from a deductive perspective, not all of these variables need to be considered for a given study; which ones matter depends on the underlying theory. Reprinted from LeBel et al. (2018) with permission.

Replication Continuum

Design Facet	Direct Replication			Conceptual Replication	
	Exact Replication (All facets under researcher control are the same)	Very Close Replication (Procedure or physical setting is different)	Close Replication (IV or DV stimuli are different)	Far Replication (IV or DV operationalization or population is different)	Very Far Replication (IV or DV constructs are different)
Effect, Hypothesis	Same	Same	Same	Same	Same
IV Construct	Same	Same	Same	Same	Different
DV Construct	Same	Same	Same	Same	Different
IV Operationalization	Same	Same	Same	Different	
DV Operationalization	Same	Same	Same	Different	
Population (e.g., age)	Same	Same	Same	Different	
IV Stimuli	Same	Same	Different		
DV Stimuli	Same	Same	Different		
Procedural Details	Same	Different			
Physical Setting	Same	Different			
Contextual Variables	Different				
⋮	⋮				

Support for the view that methodological features that are theoretically irrelevant such as the use of text versus image stimuli or the type of sample can have a strong impact on the results is provided by Landy et al. (2020), who let different groups of researchers test identical hypotheses using different study designs. The groups arrived at entirely different and even opposite conclusions for similar hypotheses. The differences in the study designs were not predicted by the theories involved in the respective studies: A priori, none of the differences (e.g., within- vs. between-subjects design, picture vs. text stimuli) “should” have affected the conclusions. Note that other theories such as demand characteristics (Orne, 2017) could help in these cases. Moreover, this does not disconfirm the deductive perspective but may be a demonstration of the lack of specification of theories - as well as a reminder that statistical choices affect statistical power by changing the variance, and

thus standardised effect sizes. In line with deviations from original studies mostly having uncertain consequences, close replications more directly test the credibility of original results, while conceptual replications that vary features of the design are concerned with generalizability.

Note that Nosek & Errington (2020) define replication as a study “for which any outcome would be considered diagnostic evidence about a claim from prior research”. This can lead to issues when the original claim is not clear on its boundary conditions. Conceptual replications that highlight limitations to the claim made clearly count, e.g. when the original claim was about a universal effect, and the replication shows that it does not hold in a specific country. Conversely, “replications” that go beyond the claim made, and test the transferability of a claim explicitly made about, e.g., maths education to science education may indeed serve to be framed differently, as they do not directly speak to the claim made originally. Where original authors’ failed to specify the scope of their claim, we would understand that they imply a broad/universally applicable relationship, which any attempts at generalisation help to corroborate or specify.

In terms of Schöch (2023), who defines an overarching type of repetitive research based on multiple dimensions, replications are concerned with the same question as a previous study, use the same (close replication) or a similar (conceptual replication) method and use different data (otherwise they are reproductions).

### 2.4 Types of reproduction

Reproductions can be numerical reproductions, testing whether the same data, code and software lead to the same results, or robustness reproductions, extending the original analysis and exploring the central finding’s limits (Dreber & Johannesson, 2024). Most reproductions would include both a numerical reproduction as baseline and then a robustness reproduction, unless the numerical reproduction is not possible due to a lack of code or software.

## Part II

# The Reproduction and Replication Process

### 3 Choosing the Target Study

Note — Preliminary Version 0.1

This is a preliminary version. Feedback welcome: [lukas.roeseler@uni-muenster.de](mailto:lukas.roeseler@uni-muenster.de) or GitHub.

Reproduction and replication studies can serve different goals and depending on the goal, the way of choosing a target study differs (see Pittelkow et al., 2023). In large-scale reproduction and replication projects, such as Brodeur et al. (2024), the Reproducibility Project: Psychology (Open Science Collaboration, 2015) or the Reproducibility Project: Cancer Biology (Errington, Mathur, et al., 2021), the primary aim is to assess the overall reliability of a field or a set of findings, leading to a top-down approach in which the decision to replicate comes first, followed by the selection of specific replication targets. This is often done in a way aimed to be representative of a field, ideally through random sampling, though this is generally constrained by practicalities. Here, individual studies are not the primary focus in the decision to repeat; instead, choices are guided by broader methodological or theoretical considerations. In contrast, individual researchers frequently adopt a bottom-up approach, where the decision to replicate is driven by engagement with a specific study (or theoretically related set of studies, e.g., Röseler et al., 2021). This may occur when a researcher wishes to build upon an existing finding and seeks to verify its robustness before doing so, or when they harbor doubts about a claim and aim to test its validity. Since reproductions and replications can serve multiple purposes—from assessing theoretical frameworks to correcting potential errors—there is no singular correct way to decide what to repeat. The choice of targets ultimately depends on the overarching goals and methodological approach of the replication effort, as well as on practical constraints. However, what does matter is that the selection of reproduction and replication targets is well justified and transparently communicated. For instance,

researchers can use structured frameworks such as the replication target selection checklist to ensure clarity and consistency in their decision-making process (Pittelkow et al., 2023). For a comment on what empirical reasons for replications are, see Kamermans et al. (2025).

## 3.1 Determining Reproduction and Replication Value

Whether a target study is “worth reproducing” or “worth replicating” is highly debated and is suggested to depend on several overlapping factors, including value (sometimes also referred to as impact or relevance), uncertainty, and feasibility (Isager et al., 2023). Below, different suggestions for operationalizing these factors are discussed systematically.

Note that there is also ongoing discussion about whether or not all studies are generally ‘worth replicating’. One perspective is what is worthy of publication is worthy of replication (Feldman, 2025) or on a different note, what is worthy of publication should be worthy of replication - though this perspective is becoming complicated through the rise of influential preprints and a public-review-curate model to publications. Naturally, a public report of a study is necessary for other researchers to attempt a replication and an available dataset is needed for a reproduction. To take a more fine-grained look at the publication status, several different types of research emerge. An article can be retracted, that is, there is no confidence anymore in its findings due to research misconduct or severe errors. When the data of a study were fabricated and it was thus retracted, a reproduction will not be informative but a replication may inform researchers about the correctness of the hypothesis unlike the original report. Other reasons (or unclear reasons) for retraction may conversely increase the replication and reproduction value, as the source of a true claim may have become untrustworthy (and not easily citeable) due to issues unrelated to its truth (e.g. plagiarism).

Replicating and reproducing every finding that was ever published appears impossible to achieve, which is why researchers need to make decisions about prioritization. In the following, we discuss criteria by which such a prioritization can occur - restricted to quantitative research.

### 3.2 Value

The original study should be somehow relevant for the replication to have value (e.g., Karhulahti et al., 2024). It may have started a research stream. For example, Jacowitz and Kahneman’s (1995) studies on anchoring and adjustment were fundamental for how anchoring effects are investigated today, and were therefore replicated by Klein et al. (2014). Field et al. (2019) propose a method for the selection of replication studies that features the theoretical importance of the original study result. Relevance may be evidenced by many citations as they show that many studies are building on the finding, testing similar hypotheses, or criticizing the study. Note that a study could also be cited as a negative example or study that has not been replicated or retracted for some reason. Isager et al. [(2021), (2023)] suggest deciding what to replicate based on sample size and citation count (but see Pittelkow et al., 2025). In a Delphi study examining consensus among psychologists that had conducted empirical replications on what should influence the decision of what study to replicate, elements that came up were the importance of the original study for research (as indicated by citations, the phenomenon being over- or understudied, and the impact factor of the journal), the theoretical relevance of the study, and the implications of the original study for practice, policy, or clinical work (Pittelkow et al., 2023). The relevance of societal impact was also stressed by (2024), as a study may have a high value for a societal problem (e.g., a new vaccine or a repeated test of a claim that is relevant in the political discourse such as criminality among immigrants).

For scientists reproducing or replicating a study because they are interested in building on its findings (including if they wish to build upon their own original findings), their interest to build on it may be a sufficient indicator of its relevance to their research program.

### 3.3 Uncertainty

The more uncertain the original study’s outcome is, the higher the potential of knowledge gained from reproduction and replication. Although no findings are definitive, research

### 3 Choosing the Target Study

reports differ in the strength of the evidence they present [e.g., Registered Reports<sup>1</sup> are typically more convincing than non preregistered studies, Soderberg et al. (2021)]. Similarly, sample size (within a given field) has been proposed as an indicator of evidence strength (Isager et al., 2021). Pittelkow et al. (2021), Pittelkow et al. (2023) and Field et al. (2019) all argued for using the current strength of evidence in favour of the original claim as an important element that features into the choosing a replication target. However, the degree of uncertainty can be uncertain or misjudged: In some areas of research a hypothesis had been claimed to be confirmed hundreds of times and yet, large-scale replication effort could not support the original hypothesis so that after hundreds of studies the existence of the phenomenon was still unknown (e.g., Friese et al., 2019). Meta-analyses allow some tests for uncertainty (e.g. via correction of bias, evaluation of risk of bias, or estimates of heterogeneity). Although there are numerous ways to meta-analytically evaluate the expected replicability of a set of claims, none of them is as solid as a well-designed replication attempt (Carter et al., 2019). Other heuristics to estimate robustness reproducibility and replicability of sets of findings have been proposed. They include the caliper test, relative proximity, or z-curve (Bartoš & Schimmack, 2022; see Adler et al., 2023, for an overview and a ShinyApp that combines these tools). Individual findings can be assessed through forensic meta-science tests — techniques such as GRIM, SPRITE, and statistical consistency checks that detect impossible or implausible values in published results (for an overview, see Heathers, 2025), and through the assessment of papers for reporting issues, such as those identified by statcheck (DeBruine & Lakens, 2025; Nuijten & Polanin, 2020). Moreover, methods such as sum of p-values (Held et al., 2024) and Bayesian re-analysis can be applied to help determine the degree of evidence for a given effect an original study might contain (Field et al., 2019; Pittelkow et al., 2021).

If the original paper reports multiple studies for the same phenomenon, researchers should check the proportion of significant studies and whether all of them confirm the hypothesis. More studies reduce the overall statistical power (power deflation). Provided the hypothesis is correct, a single study may test it with 90% power, that is, the statistical

---

<sup>1</sup>For registered reports, a journal reviews only the introduction and method and no data have been collected at this point of time. After an initial revision and “in-principle acceptance”, results are collected and the full report submitted. The second round of review is concerned only with the authors’ adherence to the preregistration and success to execute the planned study.

### 3 Choosing the Target Study

analysis will indicate the correctness of the hypothesis with a probability of .9. Now, if 10 studies are run with 90% power each, the chances of all of them supporting the hypothesis (even if it is true) are  $0.9^{10} \approx 0.35$ . For 80%, even finding five significant findings in a row is fairly unlikely ( $0.8^5 \approx 0.33$ ). Thus, studies reporting a set of many and only significant findings when each of the studies does not have very high power should be taken with caution (see also Francis, 2012; Lakens & Etz, 2017; Schimmack, 2012).

For large parts of the literature and given the overall low replicability rate in many fields, the mere lack of a reproduction or close replication by independent researchers can be used as an argument for uncertainty (e.g., Pittelkow et al., 2023), though it might also indicate that nobody beyond the original orders is interested in the phenomenon. However, it is also possible that replications have been attempted but not published, for instance when reviewers show an aversion to null findings, replications, or findings criticizing their own work.

As replications can also be used to probe a phenomenon's generalizability, a lack of variety in study designs can motivate a replication attempt. If there is reason to assume that a phenomenon is highly dependent on context (e.g., works only for graduate students, with English-speaking people, when people are incentivized, for the chosen stimuli, ...), it can be replicated and extended in other contexts. More generally, when background factors are introduced to a study (e.g., there was a positive correlation in study X but researchers suspect it to vanish under condition M), the original finding needs to be replicated in a part of the new study for the argument to work. An added benefit of this is to help avoid later claims of 'hidden moderators' in original studies; an argument which has been used previously to refute the validity of replication study results (Zwaan et al., 2018).

Finally, uncertainty can be the result of a lack of specificity in the original report: If there are details missing that cannot be retrieved anymore (e.g., researchers involved in the original study cannot be reached), a replication can develop, test and share a comprehensive set of materials. For example, Chartrand and Bargh's (1999) seminal study on the chameleon effect requires many materials but none of them are openly available. Accordingly, Pittelkow et al. (2023) identified the clarity of the original study protocol as an important element that features into the decision of replication study selection.

### 3 Choosing the Target Study

Reconstructing these materials and documenting a procedure would, thus, be a valuable contribution of a replication study.

#### Theoretical contribution

In some cases, theories are so vague that a failed replication would likely be criticized for misunderstanding the theory (e.g., Baumeister & Vohs, 2016). This suggests that the target theory was not well specified. If accepted as a reason not to replicate, it can discourage any form of replication despite the target finding being relevant. Instead, replication researchers can ask original authors for feedback on the study protocol before collecting data to try to ensure that it tests (and then articulates) the intended theory. They can also engage in adversarial collaboration or “red teaming” (Clark et al., 2022; Corcoran et al., 2023; e.g., Cowan et al., 2020), that is work together with the original authors to design a study that they agree would be able to corroborate the original claim, or to call it into doubt.

Nevertheless, it has been argued that because so many original studies are flawed, the theories built upon them are weak, or contaminated. This, in turn, can lead to flawed replication studies, especially in the case of theory that aims to explain phenomena (Field et al., 2024), risking a vicious cycle in which successful replications potentially perpetuate flaws across studies.

#### Availability of reproductions and replications

While a single replication (or robustness reproduction) cannot provide conclusive evidence in regard to the veracity of original claims, the first numerical reproduction, and arguably also the first robustness reproduction and replication adds the greatest value in terms of reducing uncertainty. Therefore, the search for existing reproductions and replications is a key part of the selection of a target study.

Although there is no comprehensive database with reproductions yet, researchers can check resources such as the Institute for Replication’s discussion paper series ([https://i4replication.org/discussion\\_paper.html](https://i4replication.org/discussion_paper.html), cf. Brodeur, Dreber, et al., 2024), the ReplicationWiki (Höffler, 2017), the CODECHECK register (<https://>

### 3 Choosing the Target Study

[//codecheck.org.uk/register/](https://codecheck.org.uk/register/), cf. Nüst & Eglen, 2021), or the Social Science Reproduction Platform (<https://www.socialsciencereproduction.org>).

With regard to replications, researchers can browse the FORRT Replication Database ([https://forrt.org/apps/fred\\_explorer.html](https://forrt.org/apps/fred_explorer.html), cf. Röseler et al., 2024), though this does not (yet) provide a replacement for manual searches. The following table provides an overview of different types of reproducibility checks.

Table 3.1: Types of Reproducibility Checks

Type	Checker	Nomination	Documentation Format	Typical Time	
No check	—	—	—	—	
Informal	Author, Co-Author, Research Assistant, Institutional Service (e.g., Code Review)	Self- nomination	Usually none	No specific format or public report	Before posting preprint or submitting to a journal
Pre- submission (e.g., CODECHECK)	Independent researcher	Self- nomination	On Zenodo with DOI	Standardized report	After posting preprint, before submitting to journal
Journal (e.g., Replication Research, Meta- Psychology, JCRE)	Researcher working for journal (e.g., reproducibil- ity manager)	Self- nomination	None or on Zenodo with DOI depending on journal	Standardized report	Before or after peer review, before publication

### 3 Choosing the Target Study

Type	Checker	Nomination	Documentation Format	Typical Time
Post-publication (e.g., I4R, Replication Research, JOPD, JRR)	Independent Resesarcher	Selection by independent researcher, possibly nomination by journal	Reproducibility of Robustness Report as preprint or in a journal	Post-publication

### 3.4 (Potential) Researcher Bias

Researchers typically work in relatively small communities to investigate the same phenomenon. These researchers are invested in their work and can be influenced by certain researcher biases, such as confirmation bias (the tendency to preferentially seek out, evaluate and recall information that supports one’s existing beliefs, see Mahoney, 1977) and motivated reasoning (generating post-hoc rationalizations that frame previous decisions in a favourable light, see Hardwicke & Wagenmakers, 2023; Munafò et al., 2020). In some cases, researchers profit off their work and the (perceived) replicability of their findings may be associated with personal financial gain. Such conflicts of interest should be disclosed, but this is not always the case (see Heirene et al., 2024).

However, replication researchers are just as prone to bias as original authors can be. There may be a publication bias in replication studies in favor of nonsignificant findings (Berinsky et al., 2021), though there is no empirical evidence for this yet. Nevertheless, greater interest in failed replications seems likely, incentivizing replication researchers to apply questionable research practices (QRPs) so that the results are nonsignificant (Baumeister et al., 2022; “null hacking,” Protzko, 2018). The problems of p-hacking and null-hacking can mostly be solved through preregistration and the use of Registered (Replication) Reports (e.g., Brodeur, Dreber, et al., 2024; Soderberg et al., 2021). Another type of bias is that researchers may be interested in replicating specific studies because of personal admiration towards a study or envy towards a colleague.

### 3 Choosing the Target Study

Even in the absence of such biases, the selection of replication targets can affect the conclusions drawn from replication research. Individual replication efforts tend to target studies that replicators doubt or find surprising. Large-scale projects sometimes use approximately random sampling (e.g., Open Science Collaboration, 2015), but might also use purposive sampling to address specific research questions (e.g., the focus on replicable findings in Klein et al., 2014). The non-random nature of most target selection means that aggregate replication rates should usually not be taken as representative of a field’s overall replicability (Kühberger & Schulte-Mecklenbeck, 2018).

#### 3.5 Feasibility

Reproductions require the original dataset. We recommend that researchers check whether the journal that published the original study has a data editor or reproducibility manager who has done a reproducibility check or provides a replication package. A replication package is a collection of materials to allow reproduction of the original results. Ideally, the dataset in the replication package, or shared separately, adheres to the FAIR criteria (Wilkinson et al., 2016), that is, it should be findable, accessible, interoperable, and reusable. Otherwise, the reproduction author would need to send a data sharing request to the original authors. In any case, they may need to consult with the original authors regarding software versions and code that does not work anymore due to changes in the software.

While original data is not necessary for replications, thorough documentation of the original study is highly beneficial. Moreover, replication researchers should evaluate whether they can achieve the target sample size, which is often a multiple of the original sample size (see section Sample Size Determination). Pittelkow et al. (2023) identified the resources available to the replicating team in terms of funding, time, equipment, and (if relevant) previous experience and expertise as important elements that feature into the replication study selection. When choosing a target study, researchers should try to anticipate practical problems, and should restrict their choice of replication target to align with their lab resources in order to prevent ‘secondary’ research waste (Field et al., 2019). Specifically, some studies may be difficult to replicate (e.g., longitudinal studies).

### 3 Choosing the Target Study

Other studies, such as those conducted with the use of highly technical, restricted, or expensive equipment, such as studies involving MRI scanning, might require expertise and knowledge that is not represented in all potential replication research teams (Field et al., 2019).

Moreover, there are no established standards for replications in some fields yet. In that case, replications may add less to the reduction of uncertainty and replicators need to propose methods. For example, replications with response-surface-analyses are not as established as those with t-tests for two-group study designs. Furthermore, the complexity of the data types can pose challenges for definitions of successful replications, such as in neuroimaging research (e.g., MRI studies) which often implicates outcome variables with an additional spatial component.

# 4 Planning and Conducting Reproductions and Replications

Note — Preliminary Version 0.1

This is a preliminary version. Feedback welcome: [lukas.roeseler@uni-muenster.de](mailto:lukas.roeseler@uni-muenster.de) or [GitHub](#).

Planning depends on whether the focus is on a certain method or a theory, that is whether the replication will be close or conceptual. Table 4.1 provides an overview of reproduction and replication types, or more generally “repetitive research” (Schöch, 2023), drawn from different resources (Cortina et al., 2023; e.g., Dreber & Johannesson, 2024; Hüffmeier et al., 2016). The decision between these types is the first step in planning.

In addition, the formation of the replication team is important, as replications can take substantial resources. Notably, repetitive research has successfully been conducted collaboratively with graduate and undergraduate students (e.g., Boyce et al., 2024; Hawkins et al., 2018; Jekel et al., 2020; Moreau & Wiebels, 2023) and we recommend the use of replication studies to engage students of different levels in conducting and publishing research.

Table 4.1: Types of repetitive research ordered by reproduction and replication and respective closeness to the original study.

Type	Description	Goals
Computational Reproduction	Reanalysis of the same data with the same code	Correctness of original report

## 4 Planning and Conducting Reproductions and Replications

Type	Description	Goals
Recoding reproduction	Reanalysis of the same data, with new (equivalent) code	Correctness of original report
Robustness Reproduction	Reanalysis of the same data with new coding choices; can vary in closeness	Robustness of original finding and sensitivity to different analytical decisions or software
Multiverse analysis	Analyze data in all sensible ways (i.e., a large number of different robustness reproductions)	Robustness and generalizability of original finding, identification of potential moderators or sources for effect variability
Internal replication	Replicate one of your own studies as closely as possible	Demonstrate one's findings' generalizability across studies and rule out fear of false-positives (e.g., for new discoveries)
Close / direct / exact replication	Conduct a new study (based on work by other researchers) that is as close as possible to the original study	Rule out fear of the original finding being a false-positive, validate original materials or design, check generalizability/external validity for theoretically irrelevant variables (e.g., population, year of data collection)
Close replication with extension	Add a variable or procedure to a close replication	Rule out fear of the original finding being a false-positive, test generalizability of original finding

Type	Description	Goals
Conceptual / constructive replication	Conduct a study with changes that may be theoretically relevant but that tests the same hypothesis (e.g., different operationalization)	Generalizability of original finding, validity of theory

## 4.1 Post Publication Conversations

When planning the replication study, additional knowledge should be taken into account such as any discussions of the original finding. There can be other studies citing the original studies, criticizing them, disconfirming their underlying theory, identifying errors, reinterpreting the finding, or making suggestions for replications. All of these might highlight considerations that need to be taken into account when designing a replication study that robustly tests the original claim or its generalisability.

Thus, replication researchers should look for post-publication discussions on the target study such as published comments and reviews, blog posts, or discussions on social media. These can often be found via Altmetric (<https://www.altmetric.com>) or other tools that allow researchers to quickly identify discussions on social media or news outlets beyond scientific journals (PubPeer, Hypothes.is, or the in-development platform Alphaxiv.org; for a review see Henriques et al. (2023)).

## 4.2 Reproduction before Replication

Many features of a replication study rest on the correctness of the original report. A reproduction allows researchers to investigate this by being able to uncover coding errors, fraud, robustness to analytical decisions, and generalizability. To make efficient use of resources, we encourage researchers to investigate the original finding's reproducibility

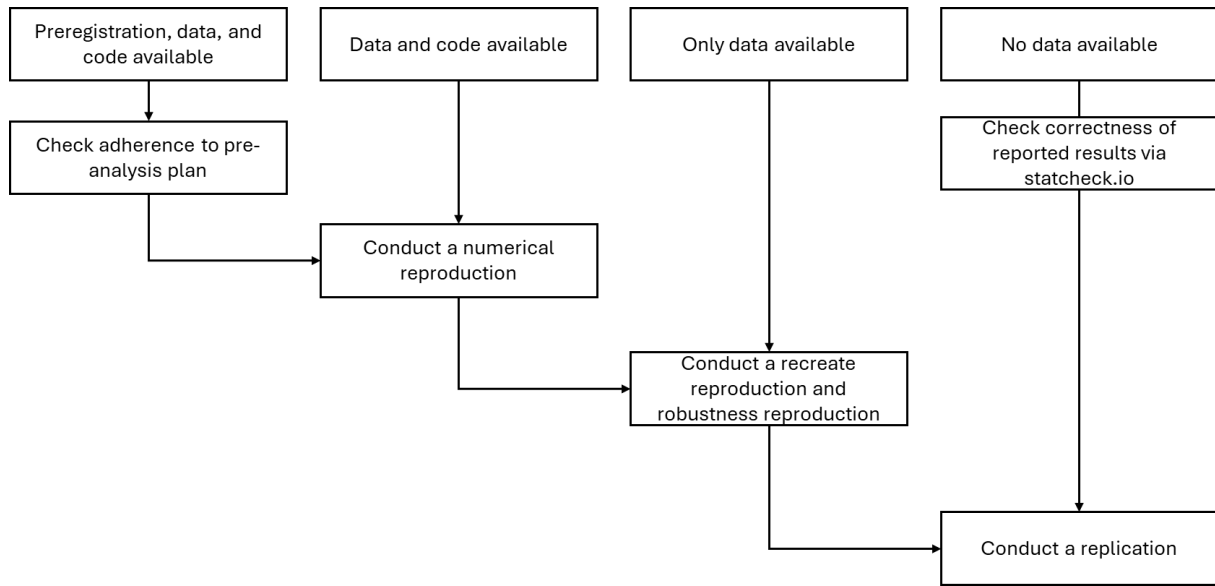
## 4 Planning and Conducting Reproductions and Replications

and robustness first. In other words, ideally, reproductions should take place before planning and conducting a replication study. Depending on the availability of the code and data, these can take several minutes to weeks.

If the original code and dataset are available, researchers can try to numerically reproduce the results. Beware, however, that differences in software versions or default settings may lead to slight deviations or require corrections in some cases (for a large-scale test of reproducibility see Brodeur, Dreber, et al., 2024). Similarly, the lack of a set seed for random number generators can mean that analyses relying on random numbers (e.g., bootstrapping) cannot be exactly reproduced. If no analysis script is available, analyses need to be recreated from the descriptions in the report (recoding reproduction). In this case, special attention should be paid to processing steps such as exclusion of outliers, transformation of variables, and handling of missing data. However, in many research areas information on these steps is often incomplete (Field et al., 2019); older research tends to be especially limited in terms of the methodological details they provide. In addition, we recommend testing the robustness of the original finding by making small alterations to the data processing and analyses procedure (robustness reproductions). For example, if the analyses were run for a subset of the data (e.g., participants aged 21 to 30 or without outliers  $\pm 3$  standard deviations), this subset can be changed (e.g., participants aged 18 to 30 or without outliers  $\pm 2$  standard deviations). Here, the initial focus should be on choices that are not determined by the theory that is presented, though this can also be used to explore the generalisability of some aspects of theory. Finally, if the original study was preregistered and the original code is available, reproduction researchers can check whether the original analyses adhere to the preregistered analysis plan.

If neither code nor data are available (or shared by the authors), no reproduction is possible. Researchers can still use automated tools to compare reported p-values with those that can be computed from test statistics via the website [statcheck.io](https://statcheck.io) (where documents may be uploaded), the corresponding R package (Nuijten & Polanin, 2020), or [papercheck](https://papercheck.org/) (DeBruine & Lakens, 2025), which is still actively maintained.

Figure 4.1: Decision tree to choose between types of reproductions depending on available code and data.



### 4.3 Close replication before conceptual replication

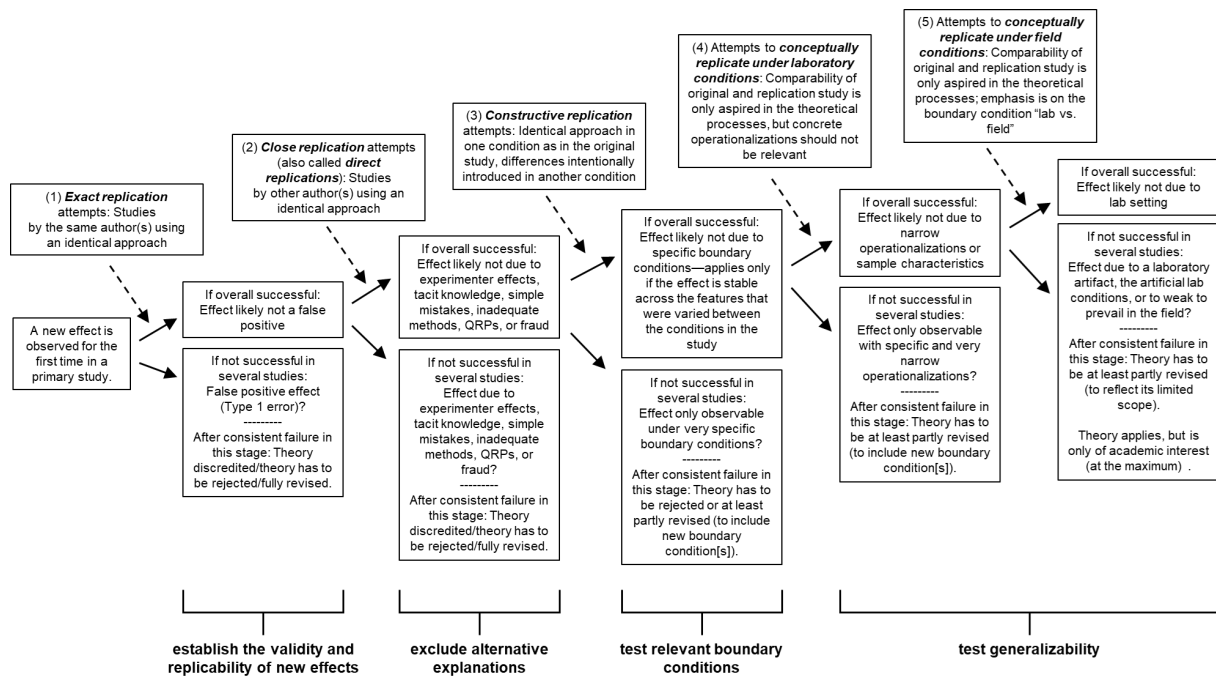
If the goal is to increase the generalizability of a specific finding, we also suggest starting with replications that adhere as close as possible to the original study (e.g., close replications) and only later conduct conceptual replications. Based on Hüffmeier et al. (2016), we propose the typology and order of replication attempts in Figure 4.2. Importantly, replications at any stage should not compromise any aspects of an original study, but rather—at the latest from the third study stage (constructive replications) onwards—try to improve one or more aspects of the original study, such as “[...] more valid measures, more critical control variables, a more realistic task, a more representative sample, or a design that allows for stronger conclusions regarding causality” (Köhler & Cortina, 2021, p. 494). Köhler and Cortina term such replications “constructive replications” and caution against the conduct of “quasi-random” replications that vary features without clear rationale.

Finally, there may be cases where the sequence of replications is not necessary, or where the context of the replication team requires a focus on generalisability to a specific context (see Section 7.3).

Note: This is an adaptation and update of the typology of replication studies by Hüffmeier

## 4 Planning and Conducting Reproductions and Replications

Figure 4.2: Sequence of replications from exact replications to conceptual replications under field conditions



et al. (2016). The typology is conceptualized as a hierarchy of studies that together help to (i) establish the validity and replicability of new effects, (ii) exclude alternative explanations, (iii) test relevant boundary conditions, and (iv) test generalizability.

## 5 Execution of Reproductions

Note — Preliminary Version 0.1

This is a preliminary version. Feedback welcome: [lukas.roeseler@uni-muenster.de](mailto:lukas.roeseler@uni-muenster.de) or GitHub.

### 5.1 Gathering resources

Prerequisites for reproduction studies are available data and ideally also code. These are usually linked within the manuscript and shared via repositories (e.g., Zenodo, OSF.io, github.com, gitlab.com) or they are part of the supplemental materials that are listed on the article’s website. In special cases, an entire original manuscript may be reproducible and written in Markdown language. Researchers searching for target studies to reproduce can check [topfactor.org](https://topfactor.org) and filter for Data transparency level 3 (Leibniz Institute for the Social Sciences, 2023, will no longer be updated). They can also use the extensive database of economics studies with available data compiled by Sebastian Kranz (Kranz, 2025).

If data are not publicly available, researchers can contact the authors of the original study. In this case, we recommend them to adhere to Guide for Accelerating Computational Reproducibility in the Social Sciences (ACRE) guidelines for constructive communication (Berkeley Initiative for Transparency in the Social Sciences, 2020).

When re-using data, researchers need to respect licenses. Generally, research data should be licensed openly, that is re-use and alteration should be permitted, likely requiring citation of the original resource (e.g., CC-BY 4.0 Attribution). Note, however, that

non-derivative licenses may prohibit reproductions; in that case separate approval would be required from the copyright holder.

When it comes to reporting, Ankel-Peters et al. (2025) provide a table for reporting results from the computational reproduction that includes resource availability (e.g., raw data, cleaning code, analysis code).

### 5.2 Contacting Authors

Reproduction authors may have to contact the original authors if there is something missing. It will often be necessary to contact the authors more than once because missing descriptions of details of the original study only become apparent once the replication study is planned. In most cases, the original paper identifies one of the authors as “corresponding author” with an e-mail address. We recommend a quick web search to check if this is the current email address, as researchers frequently change institutions and thus e-mail addresses. Sometimes, it may be most helpful to write to the last authors instead, who tend to have more stable e-mail addresses, or to copy all authors into the email. Templates for asking for materials and sharing replication results can be found in Section Appendix E. Note that original authors may not respond due to institutional changes or not being active in academia anymore.

### 5.3 Identification of Claims

Statistical analyses and their results are always used as a way to evaluate a certain claim. While Ankel-Peters et al. (2025) recommend reproductions to identify “results [that] are essential for the paper’s main argument to hold“, we acknowledge that a reproduction can also focus on secondary results if they are relevant in some other context. In either case, reproduction researchers need to justify the choice of the claim in their report

## 5.4 Preregistration

Preregistrations contain a description of the planned study or analysis prior to their execution. This way, they can reduce researchers’ ‘degrees of freedom’. In the case of reproductions, they can prevent QRPs (e.g., “null hacking,” Bryan et al., 2019; “gotcha bias,” Berinsky et al., 2021) as long as the entire analysis plan is preregistered (Brodeur, Cook, et al., 2024) and the data have not yet been accessed. While a numerical reproduction with available code does not require preregistration, we recommend a priori specification of all further planned analyses.

While preregistration of a reproduction may seem paradoxical when data are already accessible, it remains valuable as a (personal) commitment device: specifying the analysis plan in advance keeps researchers accountable and helps produce robust reproductions. If the data could already have been accessed, some readers may discount the registration, yet we would recommend to still start with this.

## 5.5 Deviations

To increase trust in the reported results, reproduction researchers need to report them in a transparent way, in a possible preregistration and the final report. Ideally, all changes to the original procedure are explained, justified, and hypotheses about their expected effect on the outcomes are reported. ## Analysis

The main part of the reproduction is the analysis. Factors that are potentially relevant for reproduction success include the software of the machine that is running the code as well as versions of the software and additional packages or plug-ins. For example, users of the open source software R can get a comprehensive overview of the program version and their machine using the function `sessionInfo()`, which should be included in supplementary materials. For python users, a package has been developed to run a similar function `session_info.show()` ([https://gitlab.com/joelostblom/session\\_info](https://gitlab.com/joelostblom/session_info)).

Apart from a numerical reproduction where the same code is used, reproduction researchers can explore alternative ways that should and should not affect the results,

test new hypotheses or theories, and run exploratory analyses. Their report should be clearly structured to discern these methods. Finally, for statistical analyses, the reproduction report should include reproducibility indicators (Dreber & Johannesson, 2024) that summarize statistical significance and relative effect sizes across the original and reproduction results. Ankel-Peters et al. (2025) recommend a visual summary of these indicators in the form of a reproducibility dashboard and specification curves (Simonsohn et al., 2020; see also Mazei et al., 2025). We strongly recommend reproduction researchers to consult the respective resources for further details.

### 5.6 Discussion

The discussion section should include a clear evaluation of the reproduction success on different levels (Ankel-Peters et al., 2025). Researchers should report possible reasons for failure (e.g., objective coding errors, changes in software packages) and the role of differences between the original and the reproduction studies' results with respect to their conclusions. Finally, if the original authors provided comments, the reproduction report should include a discussion of them.

## 6 Execution of Replications

Note — Preliminary Version 0.1

This is a preliminary version. Feedback welcome: [lukas.roeseler@uni-muenster.de](mailto:lukas.roeseler@uni-muenster.de) or GitHub.

### 6.1 Preregistration and Registered (Replication) Reports

Due to the replications being met with skepticism, we encourage researchers to adhere to the highest standards of openness and transparency. This includes preregistering the replication including the analysis plan (ideally with an analysis code that was tested beforehand using data from test runs or simulations), and criteria for the results to distinguish between a replication success and failure. A preregistration without an analysis plan provides no safeguard against p-hacking (Brodeur, Cook, et al., 2024). Beware that these criteria can be structured sequentially. For example, if there is a manipulation check, it can be defined that it has to work for the replicability to actually be evaluated. Boyce et al. (2024) also found that repeating unsuccessful replications did not change the outcomes unless obvious weaknesses were fixed.

There is a specific preregistration template by Brandt et al. (2014) but it may not fit the structure of some studies beyond social psychology (e.g., personality science or cognitive psychology; for a list of preregistration templates see <https://osf.io/7xrn9> and <https://osf.io/zab38/wiki/home>). Replications can also be published as Registered Reports, where methods are reviewed before data is collected, and a decision about publication is made based on the importance of the research question and the quality of the methods, rather than the results. This can improve the rigour of the methods and the credibility of the

results. It can also reduce any bias in favour or against null results, as the nature of results should no longer influence the final acceptance decision, though specific policies vary across journals. A list of journals offering Registered Reports (not specifically for replications) is available online.

A special review platform for Registered Reports is Peer Community in Registered Reports (PCI-RR; <https://rr.peercommunityin.org>) where a community reviews pre-prints. Once accepted by PCI-RR, authors can decide to publish their paper in participating journals (PCI friendly journals) without another editorial round.

### 6.1.1 Deviations from the Preregistration

Replication researchers need to deal with deviations from their preregistration in a transparent way. In principle, there is nothing wrong with deviating from what one had planned but most importantly, all changes should be listed, discussed, and it should be made transparent how the changes affected the results (for recommendations on changes and documentation, see Lakens (2024), and Willroth & Atherton (2024)). If changes are noticed during the data collection, many platforms also allow the upload of amendments with preserved version history.

## 6.2 Sample Size Determination

For replication studies, power analyses or other types of sample size justification can be simpler than for studies testing entirely new hypotheses because there already is a study that did what one is planning, with a result that one can refer to. However, we advise against simply using the original study's sample size. While the maxim for most decisions is "stay as close as possible to the original study", sample sizes of replication studies usually need to be larger. To be informative, replication failure should provide evidence for a null hypothesis or a substantially smaller effect size, which requires a larger sample. While a general tutorial for sample size justification is provided by Lakens (2022), we briefly present approaches that are fit for replication studies.

As a pair of original and replication studies is usually concerned with multiple effect sizes (e.g., for different scales/items/groups/hypotheses), their number and individual power need to be considered carefully. If the interpretation will rely on the significance of all effect sizes, the total power will be smaller than the power for each individual test. To get along with limited resources, researchers may choose one single effect size and argue that it is central, or clearly specify other methods for aggregation across results (e.g., testing multivariate models).

### 6.2.1 Small Telescopes Approach

The idea behind the small telescopes approach (Simonsohn, 2015) is that a replication study should be precise but how far this precision exceeds the original study should be limited. Specifically, the replication study should be able to detect an effect size for which the original study had insufficient power (usually 33%). If that effect size can be ruled out, the original study can be treated as uninformative, as with such low power, the result becomes more likely to have been a false positive.

This approach is based on the notion that replications should assess the evidentiary value of the original study, and that the ‘burden of proof’ shifts back to proponents of a hypothesis if their evidence is shown to be very weak. It is particularly appropriate when original studies are very imprecise. In that case, a replication that finds a much smaller effect may well still be compatible with the (wide) confidence interval of the original study, and it might be impossible to reject the original claim on that basis.

As an example, Schultze et al. (2018, Figure 4) found an effect in three studies with an average effect size of  $r = -.11$ , 95% CI  $[-.22, -.01]$ .

If we wanted to achieve high power to rule out an effect of  $-.01$ , and thus show that the true effect does not fall into their confidence interval, we would need a sample size of 108,218 participants (alpha = 5%, one-tailed test<sup>1</sup>). Conversely, with the small telescopes approach, we would aim to test whether the replication effect is smaller than the effect which the original study had 33% power to detect,  $r = -.043$  (alpha = 5%, one-tailed test).

---

<sup>1</sup>Note that a two-tailed test could be applied as well. Given that the original study has a clear effect and direction, one-tailed gives the original authors the benefit of the doubt.

Simonsohn (2015) showed that this requires a sample 2.5 times as large as the original for 80% power. However, we deem that level of power insufficient for replications, and instead suggest aiming for 95% power (given that a false negative in a replication leads to a wrong claim regarding the absence of an effect). This requires a multiple of 4.5 (rather than 2.5, see Wallrich, 2025), so a sample is in this case of  $4.5 * 793 = 3,569$  participants. If this replication then results in an estimate that is significantly smaller than the effect the original study had 33% power to detect, the small telescopes approach would suggest treating the original study as unable to provide reliable evidence for its claim.

### 6.2.2 Equivalence Testing

If statements can be made about the smallest effect size of interest (SESOI), researchers can aim to test whether the replication effect is smaller than that. Given that the direction is fixed by the original, this simply requires running a one-sided test, e.g., a t-test in the case of a two group design, in the “lesser” direction. If the replication effect size is significantly smaller than the SESOI, the original claim is taken to be refuted in this instance by those who accept that this is really the smallest effect of interest. Lakens et al. (2018) provide a practical tutorial on equivalence testing, though they focus on cases where observations in either direction would falsify the null hypothesis.

### 6.2.3 Bayesian Approach

External knowledge can be incorporated into sample size planning (uninformative / flat priors; heterogeneity; shrinkage) using the R package BayesRepDesign (Pawel et al., 2023). Moreover, Micheloud and Held (2022) provide a method for incorporating an original study’s uncertainty into power calculations. With interim analyses (e.g., sequential testing) , a replication study can also be stopped early and prevent wasting resources (Wagenmakers et al., 2019). However, when planning to use Bayes Factors to make inferences about replication success, it is important to plan to use plausibly narrow priors. Priors that assign substantial likelihood to effects rarely observed (e.g.,  $N(0,1)$  priors for standardized mean differences in the social sciences) may be taken to

unfairly privilege the null hypothesis, which is inappropriate for a study setting out to find support for it.

### 6.2.4 Meta-Analytical Estimates

If the replication study is part of a larger research programme, it is possible to include other studies in the estimate of the (minimum) effect size one wishes to detect/rule out. The target study may be part of a multistudy paper with at least one other study that includes an effect size for the hypothesis of interest. Researchers can compare the effect sizes and possibly pool them to get a more precise estimate (for a related Shiny App, see McShane & Böckenholt, 2017).

Metrics such as average effect sizes, heterogeneity, or the confidence interval width are valuable estimates needed for the replication's sample size justification. If there is a meta-analysis on the general topic, researchers can also use that to inform sample size planning, but should prioritise estimates that aim to correct for publication bias and other QRPs (for an overview see Nagy et al., 2025). They should also choose effect sizes from a set of studies that resembles the planned replication study as closely as possible. For correlational effects, researchers can check [metabus.org](http://metabus.org) (Bosco et al., 2017) to identify similar studies.

### 6.2.5 Multilab Replications

Multilab replications, that is replications that are conducted by different groups of researchers in different locations adhering to the same protocol, allow researchers to investigate heterogeneity of effects and estimate effect sizes with high precision. There are currently no standards for planning sample sizes for multilab replications. Depending on the specific goals, a power analysis needs to account for possible moderator hypotheses and the desired precision of effect size, heterogeneity estimates, or cultural variables. Note that this often requires large sample sizes for any level of the moderator (e.g., culture, profession). Usually, the different labs are required to collect data from a minimum number of participants. Each lab's study and all analysis scripts should be

preregistered to prevent local and global QRPs such as optional stopping or ad hoc exclusions of single labs.

### 6.3 Changes in the Methods

A replication study should closely resemble the original study, in the case of conducting a direct/close replication. However, this is difficult for multiple reasons: First, original studies may not include sufficient detail to allow for a replication (Aguinis & Solarino, 2019; Errington, Denis, et al., 2021). Second, scientific progress in the form of new methods and insights and cultural changes might require replication researchers to make changes or additions to their study. Third, obvious errors must be corrected. We elaborate on a number of reasons to deviate from an original study. In the replication report, all deviations should be reported and justified exhaustively.

- **Unspecific original materials:** If the original study does not specify a key element that is needed for the replication, replication researchers can reach out to the original study’s authors and ask for the details. If this is not possible because authors cannot be reached or they are unwilling/unable to share the materials, new materials must be created. In this case, special attention should be paid to the theory, so that the new materials exhibit both face and construct validity.
- **Deprecated materials:** If a psychological study about person perception published in the 1980s used celebrities, the examples used may no longer have the same status. For example, Mussweiler et al. (2000) used “a 10-year old car (1987 Opel Kadett E)” to be evaluated in German Marks. For a new study, car and currency would have to be replaced as a car’s age is strongly associated with price. Like most studies, the original provides no details about the conditions that a new stimulus would have to meet. Ideally, the theoretical requirements for stimuli should be specified in primary research, where they are not, replication authors need to make their own assumptions and report them explicitly (see Simons et al., 2017).
- **Translation:** Most published original studies are in English. If the replication sample’s mother tongue is not English, translation may be necessary. Standards

## 6 Execution of Replications

for translation differ strongly even between subfields. For example, when a personality scale is translated, the translated version will usually be validated and tests of invariance will be required. In social psychology, such procedures are less common, and often merely a back-translation is conducted. However, in any field, measurement invariance is required if one wants to compare effect sizes across samples, so that this should be tested rather than assumed where possible.

- **Necessity of a special sample:** Many large-scale replication projects made use of click workers (e.g., via MTurk) or use student samples. Replicators should consider if using such samples satisfy their needs and evaluate which platform to use (for best practices and ethical considerations, see Kapitány & Kavanagh (2023)). Even if the original study used such a convenience population, changing to a different convenience population may require tweaks to maintain comparability, e.g. with regard to participant attentiveness and engagement with the paradigm.
- **Quality of methods and apparatus:** Replicating old studies often faces the problem that something new has been discovered that should be taken into account. If a specific tool or method is used, there may be another recent method that is more reliable. For example, software for eye tracking studies from the early 2000s is now deprecated; there is new hardware and software that researchers will use. This might also apply to analysis methods, yet where possible, both the results from the original methods as well as state-of-the-art methods should be reported; where a choice has to be made, it is essential that invalid methods are avoided while comparability is maintained as far as possible. Finally, if the original finding's generalizability is tested, new items or tasks that vary more or less systematically can be added to compare results for the original parts versus these extensions (though order effects have to be carefully considered, as a second manipulation might affect participants differently from a first manipulation)
- **Adding checks:** Doing a replication often implies some uncertainty in the results, so it is wise to include checks that will be helpful to interpret the results, especially if they are negative. For example, if there are occurrences that would make the results meaningless, it is good to have a way to measure them and incorporate that into the study. This could include positive or negative controls (items that are diagnostic

of the method rather than the question of interest), manipulation checks (generally placed after the critical parts of the experiment), or attention checks. See Frank et al. (2025, chapter 12.3) for further discussion.

### 6.4 Piloting

If considerable resources are linked to the full execution of a replication (e.g., in a Registered Replication Report), or when new materials are used, researchers may want to consider piloting it (or parts of it) first. For multi-lab replications, researchers may want to consider a sequential study order in contrast to a simultaneous design: As Buttlere (2024) put it: “Who gets better results, 39 people doing it the first time or one person doing it 39 times?” (p.4) Beware that piloting may not be of value if it is simply an under-powered version of the study; instead it may be used to identify flaws in the methodology or test assumptions about the distribution of values or participants’ qualitative responses. Importantly, small pilot studies should never be used to derive effect sizes for power analyses as their results are too imprecise.

For instance, researchers should follow general best practices for their replications including piloting their study on a few participants to ensure that the instructions are clear, that the procedure works smoothly (e.g., website loads appropriately), and that all necessary data are recorded. A debriefing survey where pilot participants are asked about their experience, the clarity of instructions, and the clarity of any user interface, can help to identify some issues that could undermine the replication. See Frank et al. (2025, chapter 12.3.1) for further discussion on piloting studies.

#### 6.4.1 Collaborating and Consulting with the Original Authors

To reduce the chance that a failure to replicate is dismissed by the original study’s authors afterwards by pointing out a flaw in the method, researchers can consult with the original authors before running the study. However, in the past, this still has not kept the original authors from dismissing a replication as an inadequate test of a hypothesis (Baumeister & Vohs, 2016). Note that replication researchers have even been accused of “null hacking”

(Protzko, 2018) although little evidence exists for this claim (Berinsky et al., 2021). While involving original authors can help in creating a good study when reporting is poor, ideally original studies should be reported in sufficient detail for others to replicate them without further involving the original authors. Historically, the relationship between involvement of original authors and the average replication effect size is not clear (although there have been lab effects in some cases (Powers et al., 2013). This is showcased here in a few examples:

The evidence on whether involving original authors affects replication outcomes is mixed. In *Many Labs 5*, Ebersole et al. (2020) had original authors comment on replication protocols for ten effects from the Reproducibility Project, yet “the revised protocols produced effect sizes similar to those of the RP:P protocols ( $\Delta r = .002$  or  $.014$ , depending on analytic approach).” In contrast, Mac Giolla et al. (2024) found that for social priming studies, “the strongest predictor of replication success was whether or not the replication team included at least one of the authors of the original paper.” Other studies have found varying results: some suggest lab effects (Powers et al., 2013), while others found null effects of original authors’ involvement on replication outcomes (Coles et al., 2022; Klein et al., 2014; e.g., McCarthy et al., 2021; Vohs et al., 2021).

### 6.5 Adversarial Collaborations

Although they are not specific to replication projects, researchers have often issued calls for adversarial collaborations (Clark et al., 2022; Corcoran et al., 2023; Cowan et al., 2020). Thereby, groups of researchers can collaborate and try to settle conflicting views by designing and conducting a study designed to settle a debate. A related idea are “red teams” where experts are invited to critique the analysis plan, without becoming authors and thus without a conflict of interest in terms of desired results (2018).

## 6.6 Analysis

Analyses of replication results are often a compromise or a combination of the original analysis and the current state-of-the-art. Generally, replication studies should follow the original analysis plan as closely as possible. That does not only concern statistical procedures but also data processing (e.g., exclusion of outliers, transformation and computation of variables). Even when following the original analysis plan for their confirmatory analysis, researchers should still follow best practices and examine their raw data to check for distributional anomalies to detect whether participants might be inattentive, guessing or speeding, and report relevant sensitivity checks where helpful. Some things to check for include theory-agnostic condition/manipulation checks (e.g., were participants faster in the condition focused on speed?) and the results of attention checks or control trials. Generally, it is advisable not to remove participants from the main analysis on that basis, but instead to confirm that the rates of non-compliance are acceptably low and to report robustness to the exclusion of these participants. See Ward and Meade (2023) for a comprehensive review of strategies for assessing and responding to careless responding.

At times, methodological advances may suggest that the original statistical tests are not robust. In such cases, researchers may want to run both the test that the original study used, as well as the statistical approach that is most appropriate by today's standards (for instance, both the t-test that can be compared with the original, and the mixed-effect model that is justified by the study design). Where original data is available, or can be obtained from the original authors, researchers might be able to also update the analyses in the original study, which facilitates interpretation.

Where original statistical analyses are fundamentally flawed, replication researchers are faced with a difficult choice. For instance, it has been convincingly demonstrated that the famous Dunning-Kruger effect (Kruger & Dunning, 1999) is based on analyses strongly influenced by a statistical artifact, namely regression to the mean (Gignac & Zajenkowski, 2020). In such a context, one may want to report results based on the original methods alongside more robust tests, yet needs to be very careful to frame them in a way that “replication success” cannot be claimed in the absence of evidence for the original claim.

## 6 Execution of Replications

Exclusion criteria are another area where there may be tension between the original study and current best practices. Typically, it makes sense to run the analysis both ways to check for robustness, yet one analysis choice should be preregistered as the central analysis.

Naturally, original and replication results should be compared. Unstandardized values can be informative with respect to sample characteristics (e.g., overall reaction times). How to do this analytically depends on the choice of success criteria discussed in the next section.

## 7 Discussion

Note — Preliminary Version 0.1

This is a preliminary version. Feedback welcome: [lukas.roeseler@uni-muenster.de](mailto:lukas.roeseler@uni-muenster.de) or GitHub.

### 7.1 Defining and Determining Replication Success

There is no strong consensus yet on what constitutes a replication success and some approaches can be biased (Schauer & Hedges, 2021) or imprecise (Patil et al., 2016b). Like in classical null hypothesis significance testing (NHST), replication researchers face the trade-off between dichotomizing something that is not dichotomous (success vs. failure) and making a clear decision about the outcome. On the one hand this is a question about statistical choices and their interpretation, namely how to compare original and replication effect sizes (or p-values) and how to interpret differences. On the other hand, it is a more complex question about how to interpret a mixed pattern of results, where some results are consistent across original and replication, while others are not. Here, it is important for replication researchers to specify which effects are of primary interest in their preregistration, and how they will aggregate results, noting that requiring multiple effects to yield the same result will reduce statistical power.

Below, we present different approaches to assessing replication success as summarized by Heyard et al. (2025; Errington, Denis, et al., 2021, Table 1; see also Muradchianian et al., 2021; Röseler & Wallrich, 2024)

## 7 Discussion

Table 7.1: Criteria to operationalize replication success (adapted from Heyard et al., 2025 [Table 4]) For full references and descriptions, see the original table. Reused in accordance with the CC-BY license of the article.

Name	Question answered	Type of Repeatability investigated
Bayes Factor: Independent Jeffreys-Zellner- Siow BF test	“What is the evidence for the effect being present or absent in light of a replication attempt, given that we know relatively little about the expected effect size beforehand?”	Different data - same analysis
Bayes Factor: Equality-of- effect-size BF test	“What is the evidence for the effect size in the replication attempt being equal vs. unequal to the effect size in the original study?”	Different data - same analysis
Bayes Factor: Fixed-effect meta-analysis BF Test	“When pooling all data, what is the evidence for the effect being present vs. absent?”	Different data - same analysis
Replication Bayes factor	“What is the evidence for the effect from the replication attempt being comparable to what was found in the original study, or absent?” - “Are the replication results more consistent with the original study or with a null effect?”	Different data - same analysis
Significance criterion	“Do the original and replication study both find a statistical significant effect in the same direction?”	Different data - same analysis; Same data - different analysis; Different data - different analysis
Difference in effect size	“To which degree do the effects from a replication study mirror the original”	Different data - same analysis; Same data - different analysis; Different data - different analysis

Table 7.1: Criteria to operationalize replication success (adapted from Heyard et al., 2025 [Table 4]) For full references and descriptions, see the original table. Reused in accordance with the CC-BY license of the article.

Name	Question answered	Type of Repeatability investigated
Confidence interval: original effect in replication 95% CI	“Given an original effect size, (what is the probability that) does a repetition of the experiment, with an independent sample of participants, produce(s) a CI that overlaps with the original effect?”	Different data - same analysis
Confidence interval: replication effect in original 95%CI	“Given an effect size and 95% CI, (what is the probability that) does a repetition of the experiment, with an independent sample of participants, give(s) an effect that falls within the original CI?”	Different data - same analysis
Prediction interval: replication effect in original 95% prediction interval	“Do the findings from the replication study align with a reasonable expectation, given the observed variation in the original study and replication study?” - “Are the replication estimates statistically consistent with the original estimates?”	Different data - same analysis
Small Telescopes	“Are the replication results consistent with an effect size big enough to have been detectable in the original?”	Different data - same analysis
Meta-analysis	“Given an original-replication study pair, does the pooled effect align with that of the original study?” - “Given a set of replications, is the effect size reproducible across studies?”	Different data - same analysis; Same data - different analysis; Different data - different analysis
Equivalence testing	“For the replication of an original null finding, does the replication study find an effect that is equally negligible?” - “Are the results from the replication statistically equivalent to the results of the original study?”	Different data - same analysis

Table 7.1: Criteria to operationalize replication success (adapted from Heyard et al., 2025 [Table 4]) For full references and descriptions, see the original table. Reused in accordance with the CC-BY license of the article.

Name	Question answered	Type of Repeatability investigated
Minimum effect testing	“Is the replication effect size significantly different from a minimal effect size of interest, required to support the original study?”	Different data - same analysis
Causal replication framework	“How can a replication failure be interpreted, from a causal perspective”	Different data - same analysis; Different data - different analysis
Text-based machine learning model to estimate reproducibility	“Given the text of an original paper, what is the probability of replication success?”	Different data - same analysis
Prediction market	“What do the participants in a prediction market predict as the probability that the original findings will replicate?”	Different data - same analysis
Presence/Absence of elements ensuring reproducibility, via proxies	“Do the design, methods and reporting of the original paper align with community standards of reproducible and transparent research?”	Same data - same analysis; Same data - different analysis; Different data - same analysis; Different data - different analysis
Quantified reproducibility assessment, QRA	“After performing multiple measurements of an object, what is the precision of the measured quantity obtained?”	Same data - same analysis; Different data - same analysis; Same data - different analysis; Different data - different analysis

Table 7.1: Criteria to operationalize replication success (adapted from Heyard et al., 2025 [Table 4]) For full references and descriptions, see the original table. Reused in accordance with the CC-BY license of the article.

Name	Question answered	Type of Repeatability investigated
Jaccard similarity coefficient	“By what extent do the results of two (or more) fMRI experiments overlap?”	Same data - same analysis
Sceptical $p$ -value	“To what extent are the results of a replication study in conflict with the beliefs of a sceptic of the original study?”	Different data - same analysis
Modified Brinley plot	“Given a pre-specified desired effect and multiple replications, what is the share of replications that, represented graphically, achieve the desired effect?”	Same data - same analysis; Same data - different analysis; Different data - same analysis; Different data - different analysis
Likelihood-based approach for reproducibility	“Given a theoretically interesting effect size derived from the original study, what is the evidence for or against replicating this effect?”	Different data - same analysis
Bayesian mixture model for reproducibility rate	“Given the results ( $p$ -values) from a set of original and replication studies, what is the rate of reproducibility, and how is it related to certain aspects of the experiments?”	Different data - same analysis
Unified framework for estimating the credibility of published research	“For a specific published research work, what is the evidence for its credibility measured on four different dimensions: method and data transparency, analytic reproducibility, analytic robustness and effect reproducibility?”	Same data - same analysis; Same data - different analysis; Different data - same analysis; Different data - different analysis

Table 7.1: Criteria to operationalize replication success (adapted from Heyard et al., 2025 [Table 4]) For full references and descriptions, see the original table. Reused in accordance with the CC-BY license of the article.

Name	Question answered	Type of Repeatability investigated
Reproducibility scale of workflow execution - Tonkaz	“Given a certain original research paper with results based on computation, can the workflow to generate the results be executed and verified?”	Same data - same analysis; Same data - different analysis; Different data - same analysis; Different data - different analysis
Mean relative effect size	“What is the average ratio of replication study effects to original study effects?”	Different data - same analysis; Same data - same analysis
Correlation between effects	“Do the replication studies and the original studies produce effects that are correlated?”	Different data - same analysis; Same data - same analysis
Fragility Index	“Given the results of an original study were significant, what is the smallest change in the original data that is needed to deem the results non-significant? and vice-versa for original null results” - “How fragile are the original results to small changes in the underlying data?”	Same data - different analysis
Externally standardized residuals	“Is the original study consistent with the replication(s)?” - “Are all studies included in a meta-analysis replicable?”	Different data - same analysis; Same data - different analysis
Snapshot hybrid	“After replicating an original study, what is the evidence for a null, small, medium or large effect?”	Different data - same analysis
Bayesian Evidence Synthesis	“Given several conceptual replications with substantial diversity in data, design and methods but investigating the same theory, what is the evidence underlying a certain theory of interest?”	Different data - different analysis

Table 7.1: Criteria to operationalize replication success (adapted from Heyard et al., 2025 [Table 4]) For full references and descriptions, see the original table. Reused in accordance with the CC-BY license of the article.

Name	Question answered	Type of Repeatability investigated
Design analysis	“Given the results of an original study and an effect of a hypothetical replication study, what is the probability of the estimate being in the wrong direction, and what is the factor by which the magnitude of the effect is overestimated?”	Different data - same analysis
Reproducibility Maps	“For fMRI research, how many and which of the truly active voxels were strongly reproduced?”	Same data - same analysis; Same data - different analysis
Continuously cumulating meta-analytic approach	“Given subsequent replications that were performed to date, what is the current evidence for an effect?”	Different data - same analysis
Correspondence test	“To what extent does the effect size from the replication study differ or is equivalent to that of the original study?”	Different data - same analysis
Z-curve	“Do all studies combined provide credible evidence for a phenomenon?”	Different data - same analysis
Cross-validation methods	“To what extent can the stability of a result be trusted, and to what extent can the result be generalized?”	Different data - same analysis
Network Comparison Test, NCT	“Given two network structures, how similar are they to each other?”	Same data - same analysis; Different data - same analysis
Leave-one-out error	“Given a deep learning model, how generalizable are its results?”	Different data - same analysis
Subjective reproducibility assessment	“Does the replication team consider the replication as successful?” - “To what extent does the replication team trust in the reproducibility of a finding?”	Different data - same analysis

Table 7.1: Criteria to operationalize replication success (adapted from Heyard et al., 2025 [Table 4]) For full references and descriptions, see the original table. Reused in accordance with the CC-BY license of the article.

Name	Question answered	Type of Repeatability investigated
I squared - $I^2$	“Given a set of replications, to what extent is the total variation across study results due to heterogeneity?” - “How consistent are the results across replications?”	Different data - same analysis; Different data - different analysis
Credibility analysis	“How credible are the results of a study, in a Bayesian framework?”	Different data - same analysis
Consistency of original with replications, $P_{orig}$	“To what extent are the replication effect sizes consistent with the effect size of an original study?”	Different data - same analysis; Different data - different analysis
Proportion of population effects agreeing in direction with the original, $\hat{P}_{>0}$	“To what extent do the replication effect sizes agree with the sign found in the original study?”	Different data - same analysis; Different data - different analysis
RepliCATS	“How reliable do experts believe the claims from an original finding are?”	Different data - same analysis
RepeAT - Repeatability Assessment Tool	“Does the presented research align with community standards of reproducible biomedical research, using electronic health records?”	Same data - same analysis; Different data - same analysis
P interval	“Given the results of an original study, what is the range of $p$ -values a replication (following the same design) would lie in with 80% probability?”	Different data - same analysis
RipetaScore	“Given certain trust in research, reproducibility and professionalism quality indicators, how high does a paper score?”	Same data - same analysis; Different data - same analysis

Table 7.1: Criteria to operationalize replication success (adapted from Heyard et al., 2025 [Table 4]) For full references and descriptions, see the original table. Reused in accordance with the CC-BY license of the article.

Name	Question answered	Type of Repeatability investigated
Bland-Altman Plot	“Do the effects estimated in several original-replication study pairs agree with each other?” - “How good is the agreement between repeated measures/studies?”	Same data - same analysis; Same data - different analysis; Different data - same analysis; Different data - different analysis
Sceptical Bayes Factor	“In light of the replication data, at which level of evidence can an advocate of the original study convince a sceptic?”	Different data - same analysis

## 7.2 Interpreting Divergent Results (Replication Failures)

When replications succeed, the original claim gains further credence (as long as the methods are sound). However, when replications fail, many explanations and interpretations can be advanced, which need to be carefully considered and discussed in a report. While replication failure can highlight issues with statistical conclusion validity in the original studies (John et al., 2012; Nelson et al., 2018; Simmons et al., 2011), other explanations need to be considered, including issues with internal, external, and construct validity in both original and replication studies (Fabrigar et al., 2020; Vazire et al., 2022). For example, internal validity is threatened when attrition rates differ between experimental conditions in original or replication studies, creating potential confounds in the interpretation of treatment effects (H. Zhou & Fishbach, 2016). Construct validity is threatened when original or replication studies use unvalidated ad-hoc measures, fail to employ validated manipulations of the target construct, or when differences in sample characteristics between original and replication studies mean that manipulations and measures do not work as intended (Fabrigar et al., 2020; Fiedler et al., 2021; Flake &

Fried, 2020). External validity is threatened when original findings do not generalize to the specifics of the replication study due to person and context differences between studies that moderate the effect. Thus, before making statements about the original finding's robustness and generalizability, replication researchers need to critically discuss potential methodological shortcomings in both original studies and replication attempts that limit statistical conclusion, internal, external, and construct validity.

### 7.2.1 Hidden Moderator Account

One challenge for replication researchers is the identification of hidden/unknown confounds that may influence or bias the phenomenon under study. Each study has a set of potential extraneous or unknown moderator variables that is unique to it. These may seem trivial, such as the brightness of an experimental laboratory, or important, such as a cultural difference between the replicating and original studies. Yet even seemingly trivial differences could potentially change results. Often statistical and methodological choices are made to circumvent or attenuate these issues. However, for some paradigms, these variables could be unknown to the original researcher (Fiedler, 2011). These are referred to in the literature as unknown moderators, background variables, hidden moderators or fringe variables. While they are always a way to reject unpleasant replication results, they can potentially bias replications, which highlights that a single replication is never entirely conclusive (though it might raise enough doubts that researchers do not see the value in addressing the remaining uncertainty). It should be noted that the same argument could be applied to raise doubts about any original study, questioning whether the effect is really due to the hypothesised cause or due to some hidden moderator or background variable. Clearly a skeptic who stops at that level would not be taken very seriously, so that it is important to move conversations about replication failure beyond general suspicion of hidden moderators.

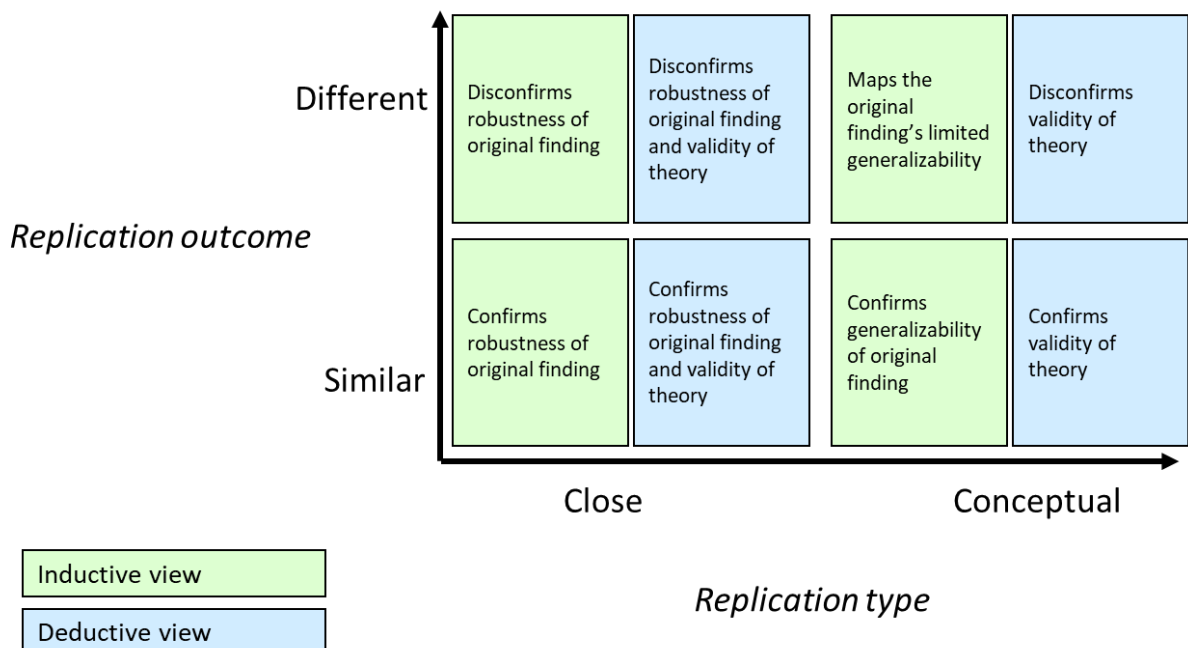
(Bargh, 2006) suggested that the evidence generated by empirical findings far outweighs the resources of (social) psychology to conceptualize and understand the mechanisms underlying their effects. Therefore, boundary conditions are not easily specified, which can impact both direct and conceptual replication success. Replication failure indicates

that the original claim does not generalise to the setting of the replication. Whether that generalises to the setting of the original study needs to be considered in light of theory, and might be a legitimate matter of contention.

### 7.3 The Role of Differences for the Interpretation of Findings

Each replication outcome should be evaluated in the light of its closeness, which is why all deviations with the respective reasons and, if possible, their potential impact on the results should be discussed. Existing theories may help assess whether a deviation should affect the outcomes. For example, most psychological theories are agnostic towards age so that a different distribution of participants' age will be unproblematic in most cases. Researchers may choose to evaluate replications from both phenomenon-focused / inductive and theory-focused / deductive views. Different types of interpretations are listed in Figure 7.1 and integrated from previous accounts by Borgstede and Scholz (Borgstede & Scholz, 2021) and Freese and Peterson (Freese & Peterson, 2017, Figure 3).

Figure 7.1: Interpretation of replication outcomes depends on the similarity/closeness between studies and the results, as well as whether an inductive or deductive view is adopted (see Section 2.3 for the conceptual framework).



Note.

- Inductive or phenomenon-oriented views assume minimal generalizability of the original finding. For example, they cannot cast doubts on the original finding unless the replication is highly similar to the original study.
- Deductive or theory-oriented views assume maximal generality of a theory. For example, different results (i.e., replication failures) cast doubts on the theory regardless of the replication type.

### 7.4 Comments from the Original Study's Authors

If the replication results do not converge with the original results, replication researchers can reach out to the original study's authors and ask for a comment that they can publish together with the replication report. A template for asking for a comment is in the appendix. Note that some journals (e.g., *Journal of Comments and Replications in Economics*) require such statements at the time of submission.

## Part III

# Advanced Topics and Applications

## 8 Communicating and Publishing

Note — Preliminary Version 0.1

This is a preliminary version. Feedback welcome: [lukas.roeseler@uni-muenster.de](mailto:lukas.roeseler@uni-muenster.de) or GitHub.

The final step of replication research is publishing and communicating the results. Researchers should adhere to best practices of transparency and openness promotion guidelines (TOP, Grant et al., 2024) and to the reporting standards of their respective field (e.g., JARS standards for reporting psychology replications, Association, n.d.). For example, they should report a link to the preregistration, analysis plan, and analysis script, share all materials and data (if possible in light of ethical and legal limitations) under an open license (see also Janz & Freese, 2021), and report methods and results comprehensively. Finally, in writing the report, reproduction and replication authors should be mindful of their language. Ideally, being replicated would be an honor for authors since other researchers deem their findings important but a failed replication could potentially harm the reputation of the original and increase distrust towards them among their peers. We recommend a descriptive and impersonal language. When criticizing bad documentation, no access to data, or brevity in methods replication authors should keep in mind the historical context of the original publication. For example, sharing data was much more difficult in the 1990s and not required in many areas until recently.

The journals that published the original studies are often also chosen by authors for publication in accordance with the potter-y-barn-rule (Srivastava, 2012). However, in our experience, many journals reject replications due to their lack of novelty. We list several options for writing and publishing the report in Table 8.1. These are non-exclusive,

that is, researchers can choose multiple of them. An overview of active journals that exclusively publish replications is in Table 8.2. Note that the Journal of Reproducibility in Neuroscience (<https://jrn.trialanderror.org>) has been discontinued and AIS Transactions on Replication Research (<https://aisel.aisnet.org/trr/>) has been moved into a journal that is not specialized on repetitions.

Table 8.1: Reporting and communicating reproductions and replications.

Type	Description
FORRT Replication Database	This open and collaborative database contains thousands of replication findings and makes them visible. Anyone can enter results using a guided survey ( <a href="https://t1p.de/fred_submit">https://t1p.de/fred_submit</a> ).
PubPeer	Researchers can comment on the original study and say that there is a replication attempt, describe the outcome, and provide links/references/DOIs to the replication(s). Researchers checking <a href="https://pubpeer.com">pubpeer.com</a> or using the browser plug-in that automatically highlights studies for which there are comments will see your comment.
Manuscript (required for Preprint and Journal Article)	Manuscripts are mostly used as they are the traditional form of a research article. For judgment and decision making, there are useful examples by Feldman (2024). For reproducibility analyses the I4R Replication Report Template ( <a href="https://osf.io/j2qrx">https://osf.io/j2qrx</a> ) can be used. Moreover, Röseler et al. (2025) provide general templates for reproductions and replications.

Type	Description
Preprint	<p>We recommend publishing a report in the form of a traditional or standardized manuscript as a preprint. This secures open access and makes the report visible, citable, and commentable. There are many preprint servers across the social sciences (e.g., PsyArxiv, SOCARXIV, SportRxiv, MediArXiv, MindRxiv, EdArXiv, AfricArXiv, or MetaArXiv). In some countries, researchers have a legal right for a secondary publication of their research (green open access). Be aware that preprints are faster in terms of publication than journal articles, but are usually not peer-reviewed.</p>
Journal article	<p>Most researchers have to “play by the rules”, that is, publish or perish (Bakker et al., 2012; Koole &amp; Lakens, 2012). While some have argued for a pottery barn rule where journals that published the original finding have to publish respective replication attempts (e.g., Srivastava, 2012), many journals are not (yet) interested in replications. Notable exceptions are listed in the appendix. This is why journals dedicated to replications have emerged (see Table 8.2). Moreover, researchers can submit their preprint to a PCI community (see <a href="https://peercommunityin.org/current-pcis">https://peercommunityin.org/current-pcis</a>), which is a preprint peer-review service. Several journals are PCI-friendly, which means that they publish articles recommended by the respective PCI.</p>

Many institutions and libraries recommend adding a CC-BY disclaimer on journal submissions that give the researchers the right to use the accepted manuscript as they like or choosing Diamond Open Access journals that are defined by no fees for publishing and reading research.

Table 8.2: Active journals dedicated to reproductions and replications.

	Commercial				
Journal name	status	Owners	Disciplines	Article types	Website
Journal of Comments and Replications in Economics (JCRE)	Non- commercial, diamond OA	ZBW	Economics	Replications, Reproduc- tions and comments research	<a href="https://jcr-econ.org">https://jcr-econ.org</a>
Replication Research (R2)	Non- commercial, diamond OA	Münster Center for Open Science and FORRT	Multidisciplinary	Reproductions, Replications, Conceptual articles	<a href="https://replicationresearch.org">https://replicationresearch.org</a>
Journal of Open Psychology Data (JOPD)	Commercial, Gold OA (APCs: 450 pounds)	Ubiquity Press	Psychology	Reproductions (only as Registered Reports)	<a href="https://openpsychologydata.metajnl.com">https://openpsychologydata.metajnl.com</a>
Journal of Robustness Reports	Non- commercial, diamond OA	SciPost	Multidisciplinary	At least two independent robustness reproductions (i.e., alternative statistical analysis pipelines) are required, limited to 500 words	<a href="https://scipost.org/JRobustRep">https://scipost.org/JRobustRep</a>

## 8 Communicating and Publishing

Journal name	Commercial status	Owners	Disciplines	Article types	Website
Rescience C	Non-commercial, diamond OA	Olivia Guest, Benoît Girard, Konrad Hinsen, Nicolas P. Rougier	Multidisciplinary	Reproductions	<a href="https://rescience.github.io">https://rescience.github.io</a>
Journal of Management Scientific Reports	Commercial (subscription based)	Sage	Management	Replications, reproductions, related methods	<a href="https://smgmt.org/jomsr">https://smgmt.org/jomsr</a>
Rescience X	Non-commercial, diamond OA	Etienne B. Roesch	Multidisciplinary	Replications (Experiments)	<a href="http://rescience.org/x">http://rescience.org/x</a>
Implementation and Replication Studies in Mathematics Education	Commercial (subscription based)	Brill	Mathematics	Replications	<a href="https://brill.com/view/journal/overview.xml">https://brill.com/view/journal/overview.xml</a>

# 9 Field-Specific Replication Challenges: An example from MRI research

Note — Preliminary Version 0.1

This is a preliminary version. Feedback welcome: [lukas.roeseler@uni-muenster.de](mailto:lukas.roeseler@uni-muenster.de) or GitHub.

## 9.1 Introduction

While the principles of reproducibility and replication apply across scientific disciplines, certain fields face distinct methodological and practical challenges. Neuroimaging research, particularly MRI-based studies, is one example where field-specific complexities cause specific challenges for data sharing, reproducibility and replicability. Other fields may have different specialized requirements on these topics. Generally, false-positive findings are likely driven by a combination of low statistical power, a high number of researcher degrees of freedom and statistical tests, and biased motivation towards obtaining positive (i.e., significant) results (Ioannidis, 2005). Most of these factors are arguably aggravated in MRI studies, making replication research in this field particularly relevant albeit challenging. In addition, the analyzed data and obtained findings are characterized by a three-dimensional spatial component (or four dimensions in case of functional MRI studies (fMRI) in combination with time series data), which further complicates the matter. In the following we summarize the inherent peculiarities of replication research in the field of neuroimaging.

## 9.2 Researcher Degrees of Freedom

Brain imaging comes with a massive number of researcher degrees of freedom along the preprocessing and analysis pipelines. Preprocessing steps include for example motion correction procedures, spatial normalization and smoothing, with additional steps necessary for some imaging modalities, such as temporal signal filtering for fMRI. For each of these steps a multitude of parameter options and toolboxes are available. It has been shown that different preprocessing toolboxes can lead to fundamentally different results, even when aiming to harmonize all parameters (X. Zhou et al., 2022), and that different teams analyzing the same dataset can arrive at different final conclusions dependent on the used pipeline (Botvinik-Nezer et al., 2020). Furthermore, a large variety of operationalizations of neurobiological targets is available. For example, cerebral gray matter structure could be investigated as voxel-wise gray matter, segmentation-based regional cortical surface, thickness or gyrification.

Analysis-wise, the high number of researcher degrees of freedom is mainly a consequence of the multidimensional data structure. Basically, the central question is where in the brain to look for effects and how to define significance in the face of a large number of tests. There is an immensely high number of single data points represented by spatial units in the obtained individual images (e.g., two-dimensional pixels or three-dimensional voxels). Analysis is often done utilizing mass-univariate approaches where a statistical model is calculated separately for each of these spatial units. For example, in cerebral MRI research the analysis of 400k voxels is common. To avoid false-positive findings, region-of-interests (ROIs) are often defined or the analysis is restricted to a smaller region in the brain (i.e., small volume correction) to narrow down the search space and unique methods to correct for multiple testing are applied (Han et al., 2019). This again results in a multitude of options, such as the anatomical vs. functional definition of a ROI based on several different atlases and a variety of voxel-based or cluster-based inference methods to choose from. Botvinik-Nezer et al. (2020) gave the same fMRI dataset (raw data and preprocessed data), along with predefined hypotheses to 70 independent analysis teams and observed substantial variation in obtained results, attributable to variability in the analysis pipelines — notably, none of the 70 teams used the same pipeline. This finding underscores the value of automated, standardised preprocessing pipelines

(discussed below) as a means to reduce this variability and improve reproducibility. Even when the same code and data is available the reproducibility of MRI analysis can be challenging (Leehr et al., 2024).

### 9.3 Sample Size Justification

The gold standard for sample size justification is a power analysis. In neuroimaging this is complicated by the outlined mass-univariate three-dimensional data structure. Any power analysis would need to incorporate assumptions about the covariance structure of all data points, as well as the spatial extent and distribution of statistical effects, and the method to correct for multiple tests. While these numerous tests are not independent from another, the extent of their spatial covariance structure is difficult to assess and depends on preprocessing steps, such as image smoothing but is also on the data and the specific research question. Due to the high number of single data points, the obtained result is not a single statistical estimate with an effect size but rather a highly individual three-dimensional distribution of effect sizes around a peak localization. Simulation-based power analysis approaches have been previously suggested to address this problem. However, valid simulations require assumptions about valid spatial distributions of effects (contingent on regional anatomical peculiarities and on the specific research question), often difficult to assess and many developed power analysis tools have been discontinued. To date the utilization of power analysis is extremely rare in MRI research.

Without proper power estimation, justifying sample size becomes challenging. As in other fields of research the statistical power ultimately depends on the expected effect size. Recent large-scale investigations in the domain of mental health neuroimaging suggest that maximum underlying effect sizes are very small across various neuroimaging modalities (below 2% explained variance, Marek et al., 2022; Winter et al., 2022) and could require thousands of individuals to obtain robust and replicable statistical estimates (Marek et al., 2022). In contrast, given the labor-intensive and costly nature of MRI assessments, most MRI studies tend to have small sample sizes, making them likely underpowered (Button et al., 2013). Smaller samples may be suitable however, for research questions where the

neurobiological effect sizes are expected to be larger, such as in psychosis research or when using highly individually tailored or within-subject designs (Lynch et al., 2024; Marek et al., 2022; Rosenberg & Finn, 2022; Spisak et al., 2023).

### 9.4 Criteria for Replication Success

Regarding the definition of replication success, the three-dimensional data structure requires special attention when defining replication success. In addition to other possible definitions, it has to be defined where in the brain the criteria of replication success should be met. As discussed above, there is not only one effect size but rather a 3D map with an effect size for each spatial unit (e.g., voxel). Goltermann & Altegoer (2025) describe a variety of potential criteria focusing on statistical significance in accordance with different spatial definitions revolving around the original finding. These include significance either at the peak voxel location (where the effect in the original study had the largest effect size), or in a ROI that can be defined in terms of spatial proximity to this peak voxel (for example a 15mm sphere with the peak voxel as a center) or in terms of an anatomically defined region where the original effect was found (for example anywhere in the hippocampus). Another possibility is the definition of a ROI directly deducted from the original results mask, if available (i.e., the original thresholded mask). Each of these spatial definitions comes with important limitations. For example, the meaning of proximity could be judged very different in different locations in the brain, as some anatomically or functionally defined structures may vary in size and distinctiveness (e.g., comparing the small and clearly-defined amygdala with a large and difficult to define dorsolateral prefrontal cortex). Thus, it may be necessary to combine several criteria in a systematic and/or subjective manner.

It should be noted that these criteria apply to voxel-based analyses. For other neuroimaging techniques, such as segmentation-based MRI analysis, diffusion tensor imaging (white matter integrity), or functional connectivity metrics, other criteria for replication success may be necessary.

## 9.5 Open Science Practices in Neuroimaging

While suggestions on open science practices and replication studies are not fundamentally different from other research areas, their necessity for neuroimaging studies could be even more pressing and there are some peculiarities to consider. Due to the high number of researcher degrees of freedom the utilization of automated preprocessing pipelines is highly advisable (e.g., Esteban et al., 2019), ideally in combination with containerized toolbox environments for preprocessing and analysis (Renton et al., 2024). In face of reproducibility challenges the transparent publication of preprocessing and analysis scripts becomes even more vital. While the publication of data is advised whenever possible, this can be difficult when sensitive patient data is included and whenever anonymization is difficult. For example, while this is currently subject of debate, MRI-derived brain scans may retain fingerprint-like identifiable features, even when removing the face from the image (Abramian & Eklund, 2019; Jwa et al., 2024). When the publication of raw data is not possible, comprehensive statistical brain maps (i.e., the statistical results in each voxel) should be made publicly available in non-thresholded form (Taylor et al., 2023) and/or data can be published in aggregated form (e.g., summarized for one brain region). Preregistrations can and should be used to make the exploitation of researcher degrees of freedom more transparent. To facilitate preregistrations in neuroimaging, there are multiple templates available. To incorporate all the specifics coming with MRI studies Beyer, Flannery et al. (2021) developed a fMRI specific template, which can be assessed here:<https://doi.org/10.23668/psycharchives.5121>. For replication research, preregistrations should contain a definition of replication success criteria that take into consideration the spatial dimension of results. Overall, open science practices and replications are still extremely rare in neuroimaging research despite their pressing relevance. Finally, there are also unique tensions to be navigated between open science practices in neuroimaging and the ongoing climate crisis, for example the sustainability of data sharing (see Puhlmann et al., 2025 for a perspective).

## Part IV

### Conclusion and Checklist

# 10 Conclusion

Note — Preliminary Version 0.1

This is a preliminary version. Feedback welcome: [lukas.roeseler@uni-muenster.de](mailto:lukas.roeseler@uni-muenster.de) or GitHub.

As replication researchers from multiple disciplines, we have discussed current standards, best-practices, and open debates surrounding the planning and execution of reproductions and replications. We have also highlighted the need for field-specific guidance and debate by presenting the special case of replications with MRI data. Our recommendations are summarized in the checklist below. With decades of research waiting to be reproduced and replicated, we hope to provide a starting point for interdisciplinary discussions and support researchers in embracing the essential and exciting element of repetitive research.

## 10.1 Reproductions and Replications Checklist

- Justify choice of target study and claims
- Choose a reproduction/replication type that aligns with your aims
- Gather and review all relevant materials
- Reproduce before you replicate, where possible

## 10 Conclusion

- Discuss all updates, changes, and extensions of the original materials (as close as possible, as updated as necessary)
  
- Preregister your study and analysis plan
  
- Predetermine conditions for success and failure
  
- Use balanced language when describing the outcomes
  
- Carefully evaluate outcomes and potential reasons for divergences
  
- Report your research comprehensively and openly accessible

# References

## Note — Preliminary Version 0.1

This is a preliminary version. Feedback welcome: [lukas.roeseler@uni-muenster.de](mailto:lukas.roeseler@uni-muenster.de) or GitHub.

- Abramian, D., & Eklund, A. (2019). Refacing: Reconstructing anonymized facial features using GANs. 2019 IEEE 16th International Symposium on Biomedical Imaging (ISBI 2019), 1104–1108. <https://doi.org/10.1109/ISBI.2019.8759515>
- Adler, S. J., Röseler, L., & Schöniger, M. K. (2023). A toolbox to evaluate the trustworthiness of published findings. *Journal of Business Research*, 167, 114189. <https://doi.org/10.1016/j.jbusres.2023.114189>
- Aguinis, H., & Solarino, A. M. (2019). Transparency and replicability in qualitative research: The case of interviews with elite informants. *Strategic Management Journal*, 40(8), 1291–1315. <https://doi.org/10.1002/smj.3015>
- Ankel-Peters, J., Brodeur, A., Dreber, A., Johannesson, M., Neubauer, F., & Rose, J. (2025). A protocol for structured robustness reproductions and replicability assessments. *Q Open*, qoaf004. <https://doi.org/10.1093/qopen/qoaf004>
- Ankel-Peters, J., Fiala, N., & Neubauer, F. (2023). Do economists replicate? *Journal of Economic Behavior & Organization*, 212, 219–232. <https://doi.org/10.1016/j.jebo.2023.05.009>
- Association, A. P. (n.d.). Journal article reporting standards (JARS): Quantitative replications reporting table. <https://apastyle.apa.org/jars/quant-table-6.pdf>.
- Bakker, M., Dijk, A. van, & Wicherts, J. M. (2012). The rules of the game called psychological science. *Perspectives on Psychological Science*, 7(6), 543–554. <https://doi.org/10.1177/1745691612459060>

## References

- Bargh, J. A. (2006). What have we been priming all these years? On the development, mechanisms, and ecology of nonconscious social behavior. *European Journal of Social Psychology*, 36(2), 147–168. <https://doi.org/10.1002/ejsp.336>
- Bartoš, F., & Schimmack, U. (2022). Z-curve 2.0: Estimating replication rates and discovery rates. *Meta-Psychology*, 6. <https://doi.org/10.15626/MP.2021.2720>
- Baumeister, R. F., Tice, D. M., & Bushman, B. J. (2022). A review of multisite replication projects in social psychology: Is it viable to sustain any confidence in social psychology's knowledge base? *Perspectives on Psychological Science*, 18(4), 912–935. <https://doi.org/10.1177/17456916221121815>
- Baumeister, R. F., & Vohs, K. D. (2016). Misguided effort with elusive implications. *Perspectives on Psychological Science*, 11(4), 574–575. <https://doi.org/10.1177/1745691616652878>
- Bekkers, R. (2024). Replication value: A comment and alternative. <https://doi.org/10.31234/osf.io/uj5g7>
- Bennett, E. A. (2021). Open science from a qualitative, feminist perspective: Epistemological dogmas and a call for critical examination. *Psychology of Women Quarterly*, 45(4), 448–456. <https://doi.org/10.1177/03616843211036460>
- Berinsky, A. J., Druckman, J. N., & Yamamoto, T. (2021). Publication biases in replication studies. *Political Analysis*, 29(3), 370–384. <https://doi.org/10.1017/pan.2020.34>
- Berkeley Initiative for Transparency in the Social Sciences. (2020). Guide for advancing computational reproducibility in the social sciences. <https://bitss.github.io/ACRE/>
- Beyer, F., Flannery, J., Gau, R., Janssen, L., Schaare, L., Hartmann, H., Nilsonne, G., Martin, S., Khalil, A., Lipp, I., Puhlmann, L., Heinrichs, H., Mohamed, A., Herholz, P., Sicorello, M., & Panagoulas, E. (2021). A fMRI pre-registration template. *PsychArchives*. <https://doi.org/10.23668/PSYCHARCHIVES.5121>
- Block, J., & Kuckertz, A. (2018). Seven principles of effective replication studies: Strengthening the evidence base of management research. *Management Review Quarterly*, 68(4), 355–359. <https://doi.org/10.1007/s11301-018-0149-3>
- Borgstede, M., & Scholz, M. (2021). Quantitative and qualitative approaches to generalization and replication—a representationalist view. *Frontiers in Psychology*, 12, 605191. <https://doi.org/10.3389/fpsyg.2021.605191>

## References

- Bosco, F. A., Uggerslev, K. L., & Steel, P. (2017). MetaBUS as a vehicle for facilitating meta-analysis. *Human Resource Management Review*, 27(1), 237–254. <https://doi.org/10.1016/j.hrmr.2016.09.013>
- Botvinik-Nezer, R., Holzmeister, F., Camerer, C. F., Dreber, A., Huber, J., Johannesson, M., & Rieck, J. R. (2020). Variability in the analysis of a single neuroimaging dataset by many teams. *Nature*, 582(7810), 84–88.
- Boyce, V., Prystawski, B., Abutto, A. B., Chen, E. M., Chen, Z., Chiu, H., & Frank, M. C. (2024). Estimating the replicability of psychology experiments after an initial failure to replicate. <https://doi.org/10.31234/osf.io/an3yb>
- Brandt, M. J., IJzerman, H., Dijksterhuis, A., Farach, F. J., Geller, J., Giner-Sorolla, R., & Van't Veer, A. (2014). The replication recipe: What makes for a convincing replication? *Journal of Experimental Social Psychology*, 50, 217–224. <https://doi.org/10.1016/j.jesp.2013.10.005>
- Brodeur, A., Cook, N. M., Hartley, J. S., & Heyes, A. (2024). Do preregistration and preanalysis plans reduce p-hacking and publication bias? Evidence from 15,992 test statistics and suggestions for improvement. *Journal of Political Economy Microeconomics*, 2(3), 527–561. <https://doi.org/10.1086/730455>
- Brodeur, A., Dreber, A., Hoces de la Guardia, F., & Miguel, E. (2024). Reproduction and replication at scale. *Nature Human Behaviour*, 8(1), 2–3. <https://doi.org/10.1038/s41562-023-01807-2>
- Bryan, C. J., Yeager, D. S., & O'Brien, J. M. (2019). Replicator degrees of freedom allow publication of misleading failures to replicate. *Proceedings of the National Academy of Sciences*, 116(51), 25535–25545. <https://doi.org/10.1073/pnas.1910951116>
- Buttliere, B. (2024). Was this registered report pilot tested? Examination of vaidis, sleegers, van leeuwen, DeMarree, ... & priolo, d. (2024). <https://doi.org/10.31234/osf.io/c6r8x>
- Button, K., Ioannidis, J., Mokrysz, C., et al. (2013). Power failure: Why small sample size undermines the reliability of neuroscience. *Nature Reviews Neuroscience*, 14, 365–376. <https://doi.org/10.1038/nrn3475>
- Calder, B. J., Phillips, L. W., & Tybout, A. M. (1981). Designing research for application. *Journal of Consumer Research*, 8(2), 197–207. <https://doi.org/10.1086/208856>
- Carter, E. C., Schönbrodt, F. D., Gervais, W. M., & Hilgard, J. (2019). Correcting

## References

- for bias in psychology: A comparison of meta-analytic methods. *Advances in Methods and Practices in Psychological Science*, 2(2), 115–144. <https://doi.org/10.1177/2515245919847196>
- Chartrand, T. L., & Bargh, J. A. (1999). The chameleon effect: The perception–behavior link and social interaction. *Journal of Personality and Social Psychology*, 76(6), 893. <https://doi.org/10.1037/0022-3514.76.6.893>
- Clark, C. J., Costello, T., Mitchell, G., & Tetlock, P. E. (2022). Keep your enemies close: Adversarial collaborations will improve behavioral science. *Journal of Applied Research in Memory and Cognition*, 11(1), 1. <https://doi.org/10.1037/mac0000004>
- Clarke, B., Lee, P. Y. (K. ), Schiavone, S. R., Rhemtulla, M., & Vazire, S. (2024). The prevalence of direct replication articles in top-ranking psychology journals. *American Psychologist*. <https://doi.org/10.1037/amp0001385>
- Cole, N. L., Ulpts, S., Bochynska, A., Kormann, E., Good, M., Leitner, B., & Ross-Hellauer, T. (2024). Reproducibility and replicability of qualitative research: An integrative review of concepts, barriers and enablers. [https://doi.org/10.31222/osf.io/n5zkw\\_v1](https://doi.org/10.31222/osf.io/n5zkw_v1)
- Coles, N. A., March, D. S., Marmolejo-Ramos, F., et al. (2022). A multi-lab test of the facial feedback hypothesis by the many smiles collaboration. *Nature Human Behaviour*, 6, 1731–1742. <https://doi.org/10.1038/s41562-022-01458-9>
- Corcoran, A. W., Hohwy, J., & Friston, K. J. (2023). Accelerating scientific progress through bayesian adversarial collaboration. *Neuron*, 111(22), 3505–3516. <https://doi.org/10.1016/j.neuron.2023.08.027>
- Cortina, J. M., Köhler, T., & Aulisi, L. C. (2023). Current reproducibility practices in management: What they are versus what they could be. *Journal of Management Scientific Reports*, 1(3-4), 171–205. <https://doi.org/10.1177/27550311231202696>
- Cowan, N., Belletier, C., Doherty, J. M., Jaroslawska, A. J., Rhodes, S., Forsberg, A., Naveh-Benjamin, M., Barrouillet, P., Camos, V., & Logie, R. H. (2020). How do scientific views change? Notes from an extended adversarial collaboration. *Perspectives on Psychological Science*, 15(4), 1011–1025. <https://doi.org/10.1177/1745691620906415>
- DeBruine, L., & Lakens, D. (2025). Papercheck: Check scientific papers for best practices. R package version 0.0.0.9053. <https://github.com/scienceverse/papercheck>.

## References

- Dreber, A., & Johannesson, M. (2024). A framework for evaluating reproducibility and replicability in economics. *Economic Inquiry*. <https://doi.org/10.1111/ecin.13244>
- Dunlap, K. (1926). The experimental methods of psychology. In C. Murchison (Ed.), *Psychologies of 1925* (pp. 331–351). Clark University Press. <https://doi.org/10.1037/11020-022>
- Ebersole, C. R., Mathur, M. B., Baranski, E., Bart-Plange, D. J., Buttrick, N. R., Chartier, C. R., & Szecsi, P. (2020). Many labs 5: Testing pre-data-collection peer review as an intervention to increase replicability. *Advances in Methods and Practices in Psychological Science*, 3(3), 309–331. <https://doi.org/10.1177/2515245920958687>
- Errington, T. M., Denis, A., Perfito, N., Iorns, E., & Nosek, B. A. (2021). Challenges for assessing replicability in preclinical cancer biology. *eLife*, 10, e67995. <https://doi.org/10.7554/eLife.67995>
- Errington, T. M., Mathur, M., Soderberg, C. K., Denis, A., Perfito, N., Iorns, E., & Nosek, B. A. (2021). Investigating the replicability of preclinical cancer biology. *eLife*, 10, e71601. <https://doi.org/10.7554/eLife.71601>
- Esteban, O., Markiewicz, C. J., Blair, R. W., Moodie, C. A., Isik, A. I., Erramuzpe, A., & Gorgolewski, K. J. (2019). fMRIPrep: A robust preprocessing pipeline for functional MRI. *Nature Methods*, 16(1), 111–116.
- Fabrigar, L. R., Wegener, D. T., & Petty, R. E. (2020). A validity-based framework for understanding replication in psychology. *Personality and Social Psychology Review*, 24(4), 316–344. <https://doi.org/10.1177/1088868320931366>
- Feldman, G. (2024). Registered report stage 1 manuscript template. <https://doi.org/10.17605/OSF.IO/YQXTP>
- Feldman, G. (2025). The value of replications goes beyond replicability and is associated with the value of the research it replicates: Commentary on isager et al., 2021. *Meta-Psychology*, 9. <https://doi.org/10.15626/MP.2024.4326>
- Fiedler, K. (2011). Voodoo correlations are everywhere—not only in neuroscience. *Perspectives on Psychological Science*, 6(2), 163–171. <https://doi.org/10.1177/1745691611400237>
- Fiedler, K., McCaughey, L., & Prager, J. (2021). Quo vadis, methodology? The key role of manipulation checks for validity control and quality of science. *Perspectives on Psychological Science*, 16(4), 816–826. <https://doi.org/10.1177/1745691620970602>

## References

- Field, S. M., Hoekstra, R., Bringmann, L., & Ravenzwaaij, D. van. (2019). When and why to replicate: As easy as 1, 2, 3? *Collabra: Psychology*, 5(1), 46. <https://doi.org/10.1525/collabra.218>
- Field, S. M., Volz, L., Kaznatcheev, A., & Dongen, N. van. (2024). Can a good theory be built using bad ingredients? *Computational Brain & Behavior*, 7, 608–615. <https://doi.org/10.1007/s42113-024-00220-w>
- Flake, J. K., & Fried, E. I. (2020). Measurement schmeasurement: Questionable measurement practices and how to avoid them. *Advances in Methods and Practices in Psychological Science*, 3(4), 456–465. <https://doi.org/10.1177/2515245920952393>
- Francis, G. (2012). Too good to be true: Publication bias in two prominent studies from experimental psychology. *Psychonomic Bulletin & Review*, 19, 151–156. <https://doi.org/10.3758/s13423-012-0227-9>
- Freese, J., & Peterson, D. (2017). Replication in social science. *Annual Review of Sociology*, 43(1), 147–165. <https://doi.org/10.1146/annurev-soc-060116-053450>
- Friese, M., Loschelder, D. D., Gieseler, K., Frankenbach, J., & Inzlicht, M. (2019). Is ego depletion real? An analysis of arguments. *Personality and Social Psychology Review*, 23(2), 107–131. <https://doi.org/10.1177/1088868318762183>
- Gignac, G. E., & Zajenkowski, M. (2020). The dunning-kruger effect is (mostly) a statistical artefact: Valid approaches to testing the hypothesis with individual differences data. *Intelligence*, 80, 101449. <https://doi.org/10.1016/j.intell.2020.101449>
- Goltermann, J., & Altegoer, L. (2025). ReFiNe-MDD: Replicability of findings in neuroimaging in depression. <https://doi.org/10.17605/OSF.IO/N86Q9>
- Grant, S., Corker, K. S., Mellor, D. T., Stewart, S. L. K., Cashin, A. G., Lagisz, M., & Nosek, B. A. (2024). TOP 2025: An update to the transparency and openness promotion guidelines. <https://doi.org/10.31222/osf.io/nmfs6>
- Han, H., Glenn, A. L., & Dawson, K. J. (2019). Evaluating alternative correction methods for multiple comparison in functional neuroimaging research. *Brain Sciences*, 9(8), 198. <https://doi.org/10.3390/brainsci9080198>
- Hardwicke, T. E., & Wagenmakers, E.-J. (2023). Reducing bias, increasing transparency and calibrating confidence with preregistration. *Nature Human Behaviour*, 7(1), 15–26. <https://doi.org/10.1038/s41562-022-01497-2>

## References

- Hawkins, R. X., Smith, E. N., Au, C., Arias, J. M., Catapano, R., Hermann, E., & Frank, M. C. (2018). Improving the replicability of psychological science through pedagogy. *Advances in Methods and Practices in Psychological Science*, 1(1), 7–18. <https://doi.org/10.1177/2515245917740427>
- Heathers, J. (2025). An introduction to forensic metascience. <https://doi.org/10.5281/zenodo.14871843>
- Heirene, R., LaPlante, D., Louderback, E., Keen, B., Bakker, M., Serafimovska, A., & Gainsbury, S. (2024). Preregistration specificity and adherence: A review of preregistered gambling studies and cross-disciplinary comparison. *Meta-Psychology*, 8. <https://doi.org/10.15626/MP.2021.2909>
- Held, L., Pawel, S., & Micheloud, C. (2024). The assessment of replicability using the sum of p-values. *Royal Society Open Science*, 11(8), 240149. <https://doi.org/10.1098/rsos.240149>
- Henriques, S. O., Rzayeva, N., Pinfield, S., & Waltman, L. (2023). Preprint review services: Disrupting the scholarly communication landscape? <https://doi.org/10.31235/osf.io/8c6xm>
- Heroux, M. A., Barba, L. A., Parashar, M., Stodden, V., & Taufer, M. (2018). Toward a compatible reproducibility taxonomy for computational and computing sciences. <https://doi.org/10.2172/1481626>
- Heyard, R., Pawel, S., Frese, J., Voelkl, B., Würbel, H., McCann, S., & Zellers, S. (2025). A scoping review on metrics to quantify reproducibility: A multitude of questions leads to a multitude of metrics. *Royal Society Open Science*, 12(7), 242076. <https://doi.org/10.1098/rsos.242076>
- Höffler, J. H. (2017). ReplicationWiki: Improving transparency in social sciences research. *D-Lib Magazine*, 23(3), 1. <https://doi.org/10.1045/march2017-hoeffler>
- Huang, F. L., & Huang, A. B. (2024). Replication studies using secondary or nonexperimental datasets. *School Psychology Review*, 1–15. <https://doi.org/10.1080/2372966X.2024.2346781>
- Hüffmeier, J., Mazei, J., & Schultze, T. (2016). Reconceptualizing replication as a sequence of different studies: A replication typology. *Journal of Experimental Social Psychology*, 66, 81–92. <https://doi.org/10.1016/j.jesp.2015.09.009>
- Hummel, T., & Manner, J. (2024). A literature review on reproducibility studies in

## References

- computer science. Proceedings of the 16th ZEUS Workshop on Services and Their Composition (ZEUS 2024)(CEUR), 3673.
- Ioannidis, J. P. (2005). Why most published research findings are false. *PLoS Medicine*, 2(8), e124.
- Isager, P. M., Aert, R. C. M. van, Bahník, Š., Brandt, M. J., DeSoto, K. A., Giner-Sorolla, R., Krueger, J. I., Perugini, M., Ropovik, I., Veer, A. E. van 't, Vranka, M., & Lakens, D. (2023). Deciding what to replicate: A decision model for replication study selection under resource and knowledge constraints. *Psychological Methods*, 28(2), 438–451. <https://doi.org/10.1037/met0000438>
- Isager, P. M., Veer, A. E. van't, Lakens, D., et al. (2021). Replication value as a function of citation impact and sample size. *MetaArXiv*. <https://doi.org/10.31222/osf.io/knjjea>
- Jacowitz, K. E., & Kahneman, D. (1995). Measures of anchoring in estimation tasks. *Personality and Social Psychology Bulletin*, 21(11), 1161–1166. <https://doi.org/10.1177/01461672952111004>
- Janz, N., & Freese, J. (2021). Replicate others as you would like to be replicated yourself. *PS: Political Science & Politics*, 54(2), 305–308. <https://doi.org/10.1017/S1049096520000943>
- Jekel, M., Fiedler, S., Allstadt Torras, R., Mischkowski, D., Dorrough, A. R., & Glöckner, A. (2020). How to teach open science principles in the undergraduate curriculum—the hagen cumulative science project. *Psychology Learning & Teaching*, 19(1), 91–106. <https://doi.org/10.1177/1475725719868149>
- John, L. K., Loewenstein, G., & Prelec, D. (2012). Measuring the prevalence of questionable research practices with incentives for truth telling. *Psychological Science*, 23(5), 524–532. <https://doi.org/10.1177/0956797611430953>
- Jwa, A. S., Koyejo, O., & Poldrack, R. A. (2024). Demystifying the likelihood of reidentification in neuroimaging data: A technical and regulatory analysis. *Imaging Neuroscience*, 2. [https://doi.org/10.1162/imag\\_a\\_00111](https://doi.org/10.1162/imag_a_00111)
- Kamermans, K. L., Dudda, L., Daikoku, T., & Verheyen, S. (2025). The is-ought problem in deciding what to replicate: Which motives guide current replication practices? [https://doi.org/10.31234/osf.io/6xdy2\\_v2](https://doi.org/10.31234/osf.io/6xdy2_v2)
- Kapitány, R., & Kavanagh, C. M. (2023). Best practices and ethical considerations for crowd-sourced data in the behavioral sciences. <https://doi.org/10.31219/osf.io/sn5gh>

## References

- Karhulahti, V., Martončík, M., & Adamkovic, M. (2024). Pre-replication in meaningful science. <https://doi.org/10.31234/osf.io/5gn7m>
- King, G. (1995). Replication, replication. *PS: Political Science & Politics*, 28(3), 444–452. <https://doi.org/10.2307/420301>
- Klein, R. A., Ratliff, K. A., Vianello, M., Adams Jr, R. B., Bahník, Š., Bernstein, M. J., & Nosek, B. A. (2014). Investigating variation in replicability. *Social Psychology*. <https://doi.org/10.1027/1864-9335/a000178>
- Köhler, T., & Cortina, J. M. (2021). Play it again, sam! An analysis of constructive replication in the organizational sciences. *Journal of Management*, 47(2), 488–518. <https://doi.org/10.1177/0149206319843985>
- Koole, S. L., & Lakens, D. (2012). Rewarding replications: A sure and simple way to improve psychological science. *Perspectives in Psychological Science*, 7, 608–614. <https://doi.org/10.1177/1745691612462586>
- Kranz, S. (2025). Extensive database of economics studies with available data. <https://ejd.econ.mathematik.uni-ulm.de/>.
- Kruger, J., & Dunning, D. (1999). Unskilled and unaware of it: How difficulties in recognizing one's own incompetence lead to inflated self-assessments. *Journal of Personality and Social Psychology*, 77(6), 1121–1134. <https://doi.org/10.1037/0022-3514.77.6.1121>
- Kühberger, A., & Schulte-Mecklenbeck, M. (2018). Selecting target papers for replication. *Behavioral and Brain Sciences*. <https://doi.org/10.1017/s0140525x18000742>
- Lakens, D. (2022). Sample size justification. *Collabra: Psychology*, 8(1), 33267. <https://doi.org/10.1525/collabra.33267>
- Lakens, D. (2024). When and how to deviate from a preregistration. *Collabra: Psychology*, 10(1). <https://doi.org/10.1525/collabra.117094>
- Lakens, D., & Etz, A. J. (2017). Too true to be bad: When sets of studies with significant and nonsignificant findings are probably true. *Social Psychological and Personality Science*, 8(8), 875–881. <https://doi.org/10.1177/1948550617693058>
- Lakens, D., Scheel, A. M., & Isager, P. M. (2018). Equivalence testing for psychological research: A tutorial. *Advances in Methods and Practices in Psychological Science*, 1(2), 259–269. <https://doi.org/10.1177/2515245918770963>
- Landy, J. F., Jia, M. L., Ding, I. L., Viganola, D., Tierney, W., Dreber, A., &

## References

- Collaboration, C. H. T. (2020). Crowdsourcing hypothesis tests: Making transparent how design choices shape research results. *Psychological Bulletin*, 146(5), 451. <https://doi.org/10.1037/bul0000220>
- Lash, T. L., Collin, L. J., & Van Dyke, M. E. (2018). The replication crisis in epidemiology: Snowball, snow job, or winter solstice? *Current Epidemiology Reports*, 5, 175–183.
- LeBel, E. P., McCarthy, R. J., Earp, B. D., Elson, M., & Vanpaemel, W. (2018). A unified framework to quantify the credibility of scientific findings. *Advances in Methods and Practices in Psychological Science*, 1(3), 389–402. <https://doi.org/10.1177/2515245918787489>
- Leehr, E. J., Seeger, F. R., Böhnlein, J., Gathmann, B., Straube, T., Roesmann, K., & Lueken, U. (2024). Association between resting-state connectivity patterns in the defensive system network and treatment response in spider phobia—a replication approach. *Translational Psychiatry*, 14(1), 137.
- Leibniz Institute for the Social Sciences. (2023). TOP factor: Open data levels of social science journals. <https://topfactor.org/journals?factor=Data+Transparency>.
- Lynch, C. J., Elbau, I. G., Ng, T., et al. (2024). Frontostriatal salience network expansion in individuals in depression. *Nature*, 633, 624–633. <https://doi.org/10.1038/s41586-024-07805-2>
- Mac Giolla, E., Karlsson, S., Neequaye, D. A., & Bergquist, M. (2024). Evaluating the replicability of social priming studies. *Meta-Psychology*, 8. <https://doi.org/10.15626/MP.2022.3308>
- Mahoney, M. J. (1977). Publication prejudices: An experimental study of confirmatory bias in the peer review system. *Cognitive Therapy and Research*, 1, 161–175. <https://doi.org/10.1007/BF01173636>
- Makel, M. C., Plucker, J. A., & Hegarty, B. (2012). Replications in psychology research: How often do they really occur? *Perspectives on Psychological Science*, 7(6), 537–542. <https://doi.org/10.1177/1745691612460688>
- Marek, S., Tervo-Clemmens, B., Calabro, F. J., Montez, D. F., Kay, B. P., Hatoum, A. S., & Dosenbach, N. U. (2022). Reproducible brain-wide association studies require thousands of individuals. *Nature*, 603(7902), 654–660.
- Mazei, J., Hüffmeier, J., & Schultze, T. (2025). Specification curve and reproducibility dashboards for social science research: Recommendations for implementation.

## References

- Advances in Methods and Practices in Psychological Science.
- McCarthy, R., Gervais, W., Aczel, B., Al-Kire, R. L., Aveyard, M., Marcella Baraldo, S., & Zogmaister, C. (2021). A multi-site collaborative study of the hostile priming effect. *Collabra: Psychology*, 7(1), 18738. <https://doi.org/10.1525/collabra.18738>
- McManus, K. (2024). Replication studies in second language acquisition research: Definitions, issues, resources, and future directions: Introduction to the special issue. *Studies in Second Language Acquisition*, 46(5), 1299–1319. <https://doi.org/10.1017/S0272263124000652>
- McShane, B. B., & Böckenholt, U. (2017). Single-paper meta-analysis: Benefits for study summary, theory testing, and replicability. *Journal of Consumer Research*, 43(6), 1048–1063. <https://doi.org/10.1093/jcr/ucw085>
- Micheloud, C., & Held, L. (2022). Power calculations for replication studies. *Statistical Science*, 37(3), 369–379. <https://doi.org/10.1214/21-STS828>
- Miłkowski, M., Hensel, W. M., & Hohol, M. (2018). Replicability or reproducibility? On the replication crisis in computational neuroscience and sharing only relevant detail. *Journal of Computational Neuroscience*, 45(3), 163–172. <https://doi.org/10.1007/s10827-018-0702-z>
- Moreau, D., & Wiebels, K. (2023). Ten simple rules for designing and conducting undergraduate replication projects. *PLOS Computational Biology*, 19(3), e1010957. <https://doi.org/10.1371/journal.pcbi.1010957>
- Munafò, M. R., Chambers, C. D., Collins, A. M., Fortunato, L., & Macleod, M. R. (2020). Research culture and reproducibility. *Trends in Cognitive Sciences*, 24(2), 91–93. <https://doi.org/10.1016/j.tics.2019.12.002>
- Muradchanian, J., Hoekstra, R., Kiers, H., & Ravenzwaaij, D. van. (2021). How best to quantify replication success? A simulation study on the comparison of replication success metrics. *Royal Society Open Science*, 8(5), 201697. <https://doi.org/10.1098/rsos.201697>
- Mussweiler, T., Strack, F., & Pfeiffer, T. (2000). Overcoming the inevitable anchoring effect: Considering the opposite compensates for selective accessibility. *Personality and Social Psychology Bulletin*, 26(9), 1142–1150. <https://doi.org/10.1177/01461672002611010>
- Nagy, T., Hergert, J., Elsherif, M. M., Wallrich, L., Schmidt, K., Waltzer, T.,

## References

- Payne, J. W., Gjoneska, B., Seetahul, Y., Wang, Y. A., Scharfenberg, D., Tyson, G., Yang, Y.-F., Skvortsova, A., Alarie, S., Graves, K., Sotola, L. K., Moreau, D., & Rubínová, E. (2025). Bestiary of questionable research practices in psychology. *Advances in Methods and Practices in Psychological Science*, 8(3). <https://doi.org/10.1177/25152459251348431>
- Nelson, L. D., Simmons, J., & Simonsohn, U. (2018). Psychology's renaissance. *Annual Review of Psychology*, 69(1), 511–534. <https://doi.org/10.1146/annurev-psych-122216-011836>
- Nosek, B. A., & Errington, T. M. (2020). What is replication? *PLoS Biology*, 18(3), e3000691. <https://doi.org/10.1371/journal.pbio.3000691>
- Nuijten, M. B., & Polanin, J. R. (2020). “Statcheck”: Automatically detect statistical reporting inconsistencies to increase reproducibility of meta-analyses. *Research Synthesis Methods*, 11(5), 574–579. <https://doi.org/10.1002/jrsm.1408>
- Nüst, D., & Eglen, S. J. (2021). CODECHECK: An open science initiative for the independent execution of computations underlying research articles during peer review to improve reproducibility. *F1000Research*, 10, 253. <https://doi.org/10.12688/f1000research.51738.2>
- Open Science Collaboration. (2015). Estimating the reproducibility of psychological science. *Science*, 349(6251), aac4716. <https://doi.org/10.1126/science.aac4716>
- Orne, M. T. (2017). On the social psychology of the psychological experiment: With particular reference to demand characteristics and their implications. In *Sociological methods* (pp. 279–299). Routledge.
- Patil, P., Peng, R. D., & Leek, J. T. (2016a). A statistical definition for reproducibility and replicability. *BioRxiv*, 066803. <https://doi.org/10.1101/066803>
- Patil, P., Peng, R. D., & Leek, J. T. (2016b). What should researchers expect when they replicate studies? A statistical view of replicability in psychological science. *Perspectives on Psychological Science*, 11(4), 539–544. <https://doi.org/10.1177/1745691616646366>
- Pawel, S., Consonni, G., & Held, L. (2023). Bayesian approaches to designing replication studies. *Psychological Methods*. <https://doi.org/10.1037/met0000604>
- Perry, T., Morris, R., & Lea, R. (2022). A decade of replication study in education? A mapping review (2011–2020). *Educational Research and Evaluation*, 27(1-2), 12–34.

## References

- <https://doi.org/10.1080/13803611.2021.2022315>
- Pittelkow, M. M., Field, S. M., Isager, P. M., Veer, T. van't, A. E. Anderson, Cole, S. N., & Van Ravenzwaaij, D. (2023). The process of replication target selection in psychology: What to consider? *Royal Society Open Science*, 10(2), 210586. <https://doi.org/10.1098/rsos.210586>
- Pittelkow, M. M., Field, S. M., & Ravenzwaaij, D. van. (2025). Thinking beyond RVCN: Addressing the complexity of replication target selection. [https://doi.org/10.31234/osf.io/6tmyx\\_v2](https://doi.org/10.31234/osf.io/6tmyx_v2)
- Pittelkow, M. M., Hoekstra, R., Karsten, J., & Ravenzwaaij, D. van. (2021). Replication target selection in clinical psychology: A bayesian and qualitative reevaluation. *Clinical Psychology: Science and Practice*, 28(2), 210. <https://doi.org/10.1037/cps0000013>
- Powers, K. L., Brooks, P. J., Aldrich, N. J., Palladino, M. A., & Alfieri, L. (2013). Effects of video-game play on information processing: A meta-analytic investigation. *Psychonomic Bulletin & Review*, 20(6), 1055–1079. <https://doi.org/10.3758/s13423-013-0418-z>
- Pownall, M. (2022). Is replication possible for qualitative research? <https://doi.org/10.31234/osf.io/dwxeg>
- Protzko, J. (2018). Null-hacking, a lurking problem. <https://doi.org/10.31234/osf.io/9y3mp>
- Puhlmann, L., Koppold, A., Feld, G., Lonsdorf, T., Hilger, K., Vogel, S., & Hartmann, H. (2025). There is no research on a dead planet—fostering ecologically sustainable open science practices in neuroscience. OSF Preprint. [https://doi.org/10.31219/osf.io/rju75\\_v1](https://doi.org/10.31219/osf.io/rju75_v1)
- Renton, A. I., Dao, T. T., Johnstone, T., Civier, O., Sullivan, R. P., White, D. J., Lyons, P., Slade, B. M., Abbott, D. F., Amos, T. J., Bollmann, S., Botting, A., Campbell, M. E. J., Chang, J., Close, T. G., Dörig, M., Eckstein, K., Egan, G. F., Evas, S., & Bollmann, S. (2024). Neurodesk: An accessible, flexible and portable data analysis environment for reproducible neuroimaging. *Nature Methods*, 21(5), 804–808. <https://doi.org/10.1038/s41592-023-02145-x>
- Röseler, L., Hein, M., & Oppong Boakye, P. (2025). Standardized reproduction and replication templates (StaRT). <https://doi.org/10.17605/OSF.IO/BRXTD>

## References

- Röseler, L., Kaiser, L., Doetsch, C., Klett, N., Seida, C., Schütz, A., & Zhang, Y. (2024). The replication database: Documenting the replicability of psychological science. *Journal of Open Psychology Data*, 12(1), 8. <https://doi.org/10.5334/jopd.101>
- Röseler, L., Schütz, A., Blank, P. A., Dück, M., Fels, S., Kupfer, J., Scheelje, L., & Seida, C. (2021). Evidence against subliminal anchoring: Two close, highly powered, preregistered, and failed replication attempts. *Journal of Experimental Social Psychology*, 92, 104066. <https://doi.org/10.1016/j.jesp.2020.104066>
- Röseler, L., & Wallrich, L. (2024). FReD: Interfaces to the FORRT replication database. <http://forrt.org/FReD/>
- Rosenberg, M. D., & Finn, E. S. (2022). How to establish robust brain–behavior relationships without thousands of individuals. *Nature Neuroscience*, 25, 835–837. <https://doi.org/10.1038/s41593-022-01110-9>
- Schauer, J. M., & Hedges, L. V. (2021). Reconsidering statistical methods for assessing replication. *Psychological Methods*, 26(1), 127–139. <https://doi.org/10.1037/met0000302>
- Schimmack, U. (2012). The ironic effect of significant results on the credibility of multiple-study articles. *Psychological Methods*, 17(4), 551. <https://doi.org/10.1037/a0029487>
- Schmidt, S. (2009). Shall we really do it again? The powerful concept of replication is neglected in the social sciences. *Review of General Psychology*, 13(2), 90–100. <https://doi.org/10.1037/a0015108>
- Schöch, C. (2023). Repetitive research: A conceptual space and terminology of replication, reproduction, revision, reanalysis, reinvestigation and reuse in digital humanities. *International Journal of Digital Humanities*, 5(2), 373–403. <https://doi.org/10.1007/s42803-023-00073-y>
- Schultze, T., Gerlach, T. M., & Rittich, J. C. (2018). Some people heed advice less than others: Agency (but not communion) predicts advice taking. *Journal of Behavioral Decision Making*, 31(3), 430–445. <https://doi.org/10.1002/bdm.2065>
- Simmons, J. P., Nelson, L. D., & Simonsohn, U. (2011). False-positive psychology: Undisclosed flexibility in data collection and analysis allows presenting anything as significant. *Psychological Science*, 22(11), 1359–1366. <https://doi.org/10.1177/0956797611417632>

## References

- Simons, D. J., Shoda, Y., & Lindsay, D. S. (2017). Constraints on generality (COG): A proposed addition to all empirical papers. *Perspectives on Psychological Science*, 12(6), 1123–1128. <https://doi.org/10.1177/1745691617708630>
- Simonsohn, U. (2015). Small telescopes: Detectability and the evaluation of replication results. *Psychological Science*, 26(5), 559–569. <https://doi.org/10.1177/0956797614567341>
- Simonsohn, U., Simmons, J. P., & Nelson, L. D. (2020). Specification curve analysis. *Nature Human Behaviour*, 4, 1208–1214. <https://doi.org/10.1038/s41562-020-0912-z>
- Soderberg, C. K., Errington, T. M., Schiavone, S. R., et al. (2021). Initial evidence of research quality of registered reports compared with the standard publishing model. *Nature Human Behaviour*, 5, 990–997. <https://doi.org/10.1038/s41562-021-01142-4>
- Spisak, T., Bingel, U., & Wager, T. D. (2023). Multivariate BWAS can be replicable with moderate sample sizes. *Nature*, 615, E4–E7. <https://doi.org/10.1038/s41586-023-05745-x>
- Srivastava, S. (2012). A pottery barn rule for scientific journals. *The Hardest Science blog*. <https://thehardestscience.com/2012/09/27/a-pottery-barn-rule-for-scientific-journals>
- Syed, M. (2023). Replication or generalizability? How flexible inferences uphold unfounded universal claims. <https://doi.org/10.31234/osf.io/znv5r>
- Taylor, P. A., Reynolds, R. C., Calhoun, V., Gonzalez-Castillo, J., Handwerker, D. A., Bandettini, P. A., & Chen, G. (2023). Highlight results, don't hide them: Enhance interpretation, reduce biases and improve reproducibility. *Neuroimage*, 274, 120138.
- The Turing Way Community. (2025). *The turing way: A handbook for reproducible, ethical and collaborative research (1.2.3 ed.)*. Zenodo. <https://doi.org/10.5281/zenodo.15213042>
- Tsang, E. W., & Kwan, K. M. (1999). Replication and theory development in organizational science: A critical realist perspective. *Academy of Management Review*, 24(4), 759–780. <https://doi.org/10.2307/259353>
- Urminsky, O., & Dietvorst, B. J. (2024). Taking the full measure: Integrating replication into research practice to assess generalizability. *Journal of Consumer Research*, 51(1), 157–168. <https://doi.org/10.1093/jcr/ucae007>
- Van Bavel, J. J., Mende-Siedlecki, P., Brady, W. J., & Reinero, D. A. (2016). Contextual

## References

- sensitivity in scientific reproducibility. *Proceedings of the National Academy of Sciences*, 113(23), 6454–6459. <https://doi.org/10.1073/pnas.1521897113>
- Vazire, S., Schiavone, S. R., & Bottesini, J. G. (2022). Credibility beyond replicability: Improving the four validities in psychological science. *Current Directions in Psychological Science*, 31(2), 162–168. <https://doi.org/10.1177/09637214211067779>
- Voelkl, B., Heyard, R., Fanelli, D., Wever, K. E., Held, L., Maniadis, Z., & Würbel, H. (2025). Defining reproducibility. <https://doi.org/10.17605/OSF.IO/BR9SP>
- Vohs, K. D., Schmeichel, B. J., Lohmann, S., Gronau, Q. F., Finley, A. J., Ainsworth, S. E., Alquist, J. L., Baker, M. D., Brizi, A., Bunyi, A., Butschek, G. J., Campbell, C., Capaldi, J., Cau, C., Chambers, H., Chatzisarantis, N. L. D., Christensen, W. J., Clay, S. L., Curtis, J., & Albarracín, D. (2021). A multisite preregistered paradigmatic test of the ego-depletion effect. *Psychological Science*, 32(10), 1566–1581. <https://doi.org/10.1177/0956797621989733>
- Wagenmakers, E.-J., Gronau, Q. F., & Vandekerckhove, J. (2019). Five bayesian intuitions for the stopping rule principle. <https://doi.org/10.31234/osf.io/5ntkd>
- Wallrich, L. (2025). Small telescopes for higher-power replications. Personal blog. <https://www.lukaswallrich.coffee/blog/small-telescopes-for-higher-power-replications/>
- Ward, M. K., & Meade, A. W. (2023). Dealing with careless responding in survey data: Prevention, identification, and recommended best practices. *Annual Review of Psychology*, 74(1), 577–596. <https://doi.org/10.1146/annurev-psych-040422-045007>
- Wilkinson, M. D., Dumontier, M., Aalbersberg, I. J., Appleton, G., Axton, M., Baak, A., & Mons, B. (2016). The FAIR guiding principles for scientific data management and stewardship. *Scientific Data*, 3(1), 1–9. <https://doi.org/10.1038/sdata.2016.18>
- Willroth, E. C., & Atherton, O. E. (2024). Best laid plans: A guide to reporting preregistration deviations. *Advances in Methods and Practices in Psychological Science*, 7(1), 25152459231213802. <https://doi.org/10.1177/25152459231213802>
- Winter, N. R., Leenings, R., Ernsting, J., Sarink, K., Fisch, L., Emden, D., & Hahn, T. (2022). Quantifying deviations of brain structure and function in major depressive disorder across neuroimaging modalities. *JAMA Psychiatry*, 79(9), 879–888.
- Zhou, H., & Fishbach, A. (2016). The pitfall of experimenting on the web: How unattended selective attrition leads to surprising (yet false) research conclusions. *Journal of Personality and Social Psychology*, 111(4), 493–504.

## References

<https://doi.org/10.1037/pspa0000056>




Zhou, X., Wu, R., Zeng, Y., Qi, Z., Ferraro, S., Xu, L., & Becker, B. (2022). Choice of voxel-based morphometry processing pipeline drives variability in the location of neuroanatomical brain markers. *Communications Biology*, 5(1), 913.

Zwaan, R. A., Etz, A., Lucas, R. E., & Donnellan, M. B. (2018). Making replication mainstream. *Behavioral and Brain Sciences*, 41, e120. <https://doi.org/10.1017/S0140525X17001972>








# A Author Contributions

Note — Preliminary Version 0.1



This is a preliminary version. Feedback welcome: [lukas.roeseler@uni-muenster.de](mailto:lukas.roeseler@uni-muenster.de) or GitHub.

No.	Author	Contribution (CRediT)	Affiliation
1	Röseler, Lukas* 	Conceptualization, Project Administration, Writing – original draft, Writing – review & editing	Münster Center for Open Science, University of Münster
2	Wallrich, Lukas* 	Writing – original draft, Writing – review & editing	Birkbeck Business School, University of London
3	Hartmann, Helena 	Writing – original draft, Writing – review & editing	Department for Neurology and Center for Translational Neuro- and Behavioral Sciences (C-TNBS), University Hospital Essen

## A Author Contributions

No.	Author	Contribution (CRediT)	Affiliation
4	Altegoer, Luisa 	Writing – review & editing	University of Münster, Institute for Translational Psychiatry
5	Boyce, Veronica 	Writing – review & editing	Department of Psychology, Stanford University
6	Field, Sarahanne M. 	Writing – review & editing	Department of Pedagogy, University of Groningen
7	Goltermann, Janik 	Writing – review & editing	University of Münster, Institute for Translational Psychiatry
8	Hüffmeier, Joachim 	Writing – review & editing	TU Dortmund University
9	Pennington, Charlotte R. 	Writing – review & editing	School of Psychology, Aston University, Birmingham
10	Pittelkow, Merle-Marie 	Writing – review & editing	Berlin Institute of Health at Charité – Univer- sitätsmedizin Berlin

## A Author Contributions

No.	Author	Contribution (CRediT)	Affiliation
11	Silverstein, Priya 	Writing – review & editing	Center for Neuroscience and Cell Biology, University of Coimbra; Institute for Globally Distributed Open Research and Education
12	van Ravenzwaaij, Don 	Writing – review & editing	Department of Psychology, University of Groningen
13	Azevedo, Flavio 	Writing – original draft, Writing – review & editing	University of Utrecht, Department of Interdisciplinary Social Science

\*shared first authorship

## B Potential Conflicts of Interest

Note — Preliminary Version 0.1

This is a preliminary version. Feedback welcome: [lukas.roeseler@uni-muenster.de](mailto:lukas.roeseler@uni-muenster.de) or GitHub.

A large proportion of the authors are members of FORRT, an organization dedicated to integrating open and reproducible science into higher education. LR, LW, FA, and JG are inaugural editors of the in-development journal Replication Research (<https://replicationresearch.org>). Besides their conviction of the value of replications, their current project's success relies on researchers conducting reproductions and replications. LR is the managing director of an institutional open science center and proponent of repetitive research. The authors declare that they have no further potential conflicts of interest.

## C Funding

Note — Preliminary Version 0.1

This is a preliminary version. Feedback welcome: [lukas.roeseler@uni-muenster.de](mailto:lukas.roeseler@uni-muenster.de) or GitHub.

LR received funding from the University of Münster and the ‘Landesinitiative openaccess.nrw’. LW and LR received funding from ‘UK Research and Innovation’. LW, HH, and FA received funding from the ‘Nederlandse Organisatie voor Wetenschappelijk Onderzoek’. JG received funding by ‘Innovative Medizinische Forschung’ (IMF) of the medical faculty of the University of Münster (GO122301). HH was supported by the Deutsche Forschungsgemeinschaft (DFG, German Research Foundation) - Project-ID 422744262 - TRR 289 (gefördert durch die Deutsche Forschungsgemeinschaft (DFG) - Projektnummer 422744262 - TRR 289).

## D Acknowledgments

Note — Preliminary Version 0.1

This is a preliminary version. Feedback welcome: [lukas.roeseler@uni-muenster.de](mailto:lukas.roeseler@uni-muenster.de) or GitHub.

This work is an initiative from The Framework for Open and Reproducible Research Training (FORRT; <https://forrt.org>), and all core-team authors are active members of FORRT's Replication Hub (<https://forrt.org/replication-hub>).

We thank Patrick Smela for valuable ideas on defining replication success and Abel Brodeur for suggestions about definitions and the relationship between reproducibility and replicability.

# E Email templates

Note — Preliminary Version 0.1

This is a preliminary version. Feedback welcome: [lukas.roeseler@uni-muenster.de](mailto:lukas.roeseler@uni-muenster.de) or GitHub.

## E.1 Asking for materials and data

Dear [name of author(s)],

We are conducting replication research using some of your research. Specifically, we [brief name of the phenomenon and study that will be replicated]. [We do this because ... e.g., your research addresses a very important question.] Can you please send us the following materials to help us design a replication as close as possible to your original study?

- [list of required materials/data/code]
- ...

Citation of original study: [add citation]

We are looking forward to your responses!

Thank you, [Your name]

## E.2 Asking for comments on an experimental paradigm

Dear [name of authors],

We are planning a replication of some of your research. Specifically, we are aiming to replicate your study [study details and citation]. [we are interested in these findings because ...] I'm writing to share a mock-up of the replication to get your feedback on whether this paradigm accurately captures the design of your study. Please let me know if you have any comments or concerns that you'd like to share. Here's a link to my paradigm.

Any insights you have into details that differ from your own study would be much appreciated. I will be replicating your experiment on [planned recruitment sample]. [I know this is a deviation from the original population you tested, and I will note this sample decision prominently in any writeups.]

Thanks again, [Your name]

## E.3 Asking for comments on replication results

Dear [name of author(s)],

We have conducted replication research using some of your research. Specifically, we [brief name of the phenomenon and study that was replicated]. In our study [description of results].

We want to provide you with an opportunity to comment on these findings. We plan to publish the replication report via [paper or publication platform, e.g., FORRT's Replication Hub], which asks replication studies to be submitted alongside comments from the authors of the original study. Your comment – if you choose to give one – will be part of the report.

- Citation of original study: [add citation]
- Replication study: [add link to document or attach it to the e-mail]

## E Email templates

We are looking forward to your responses!

Thank you, [Your name]